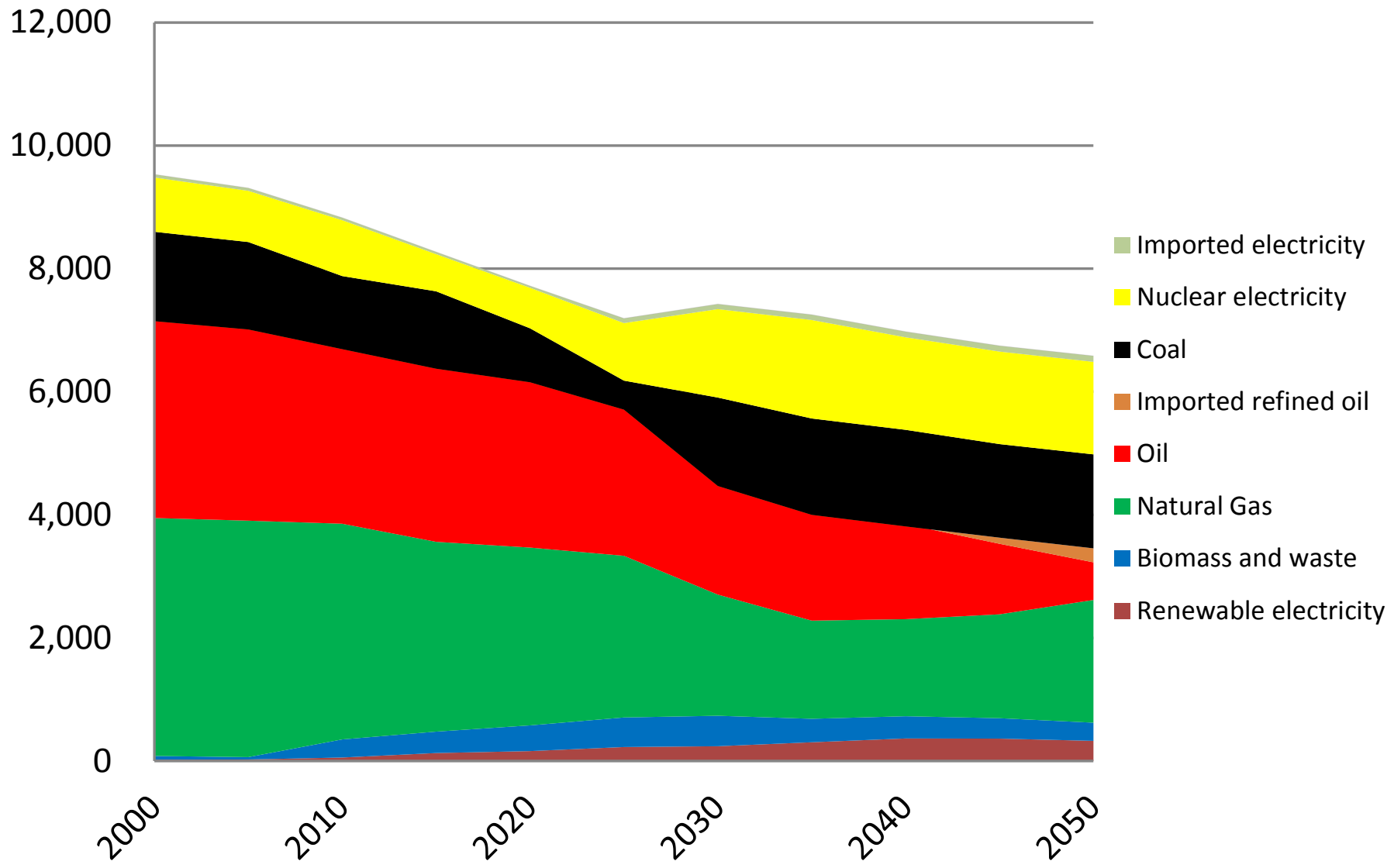
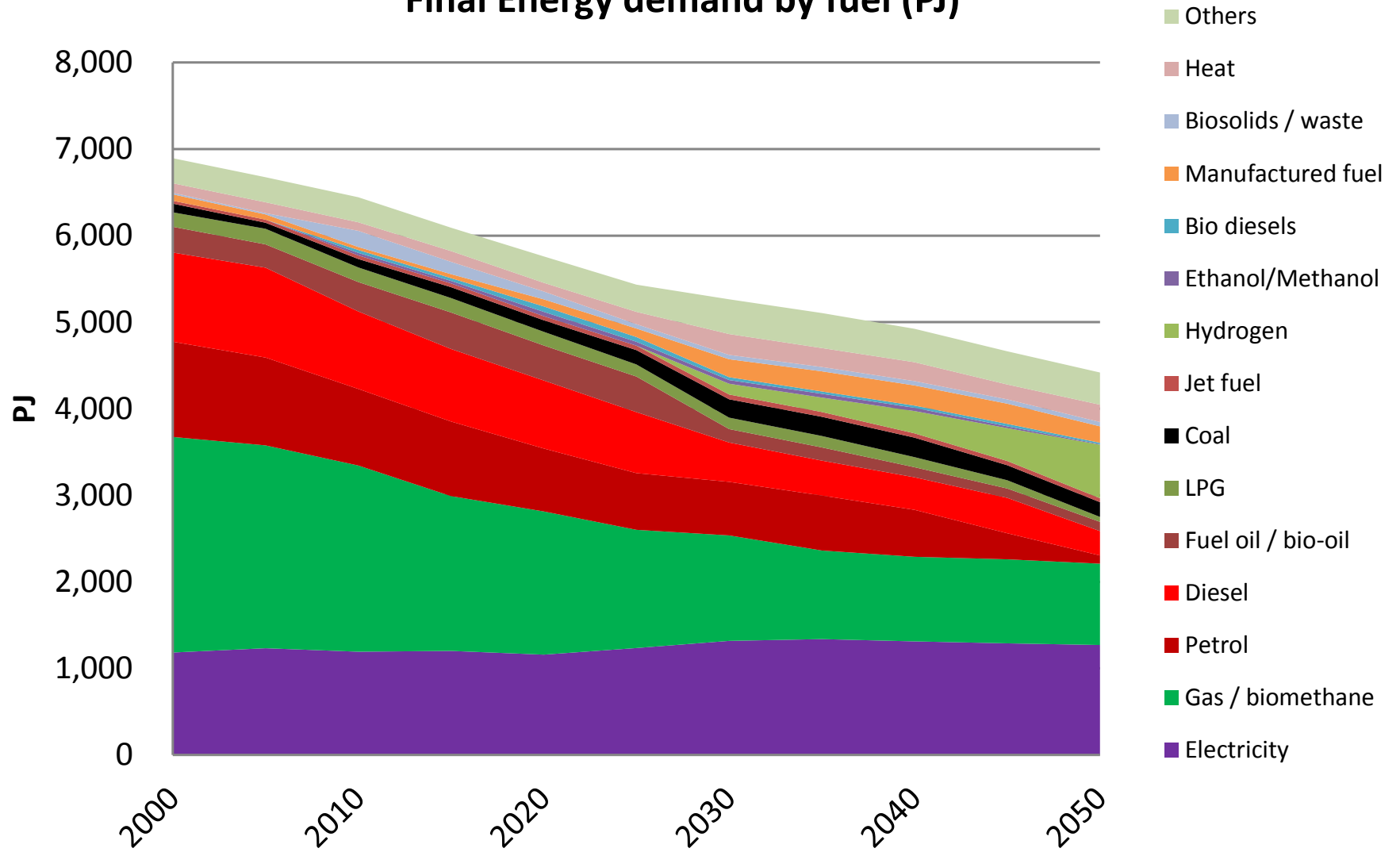


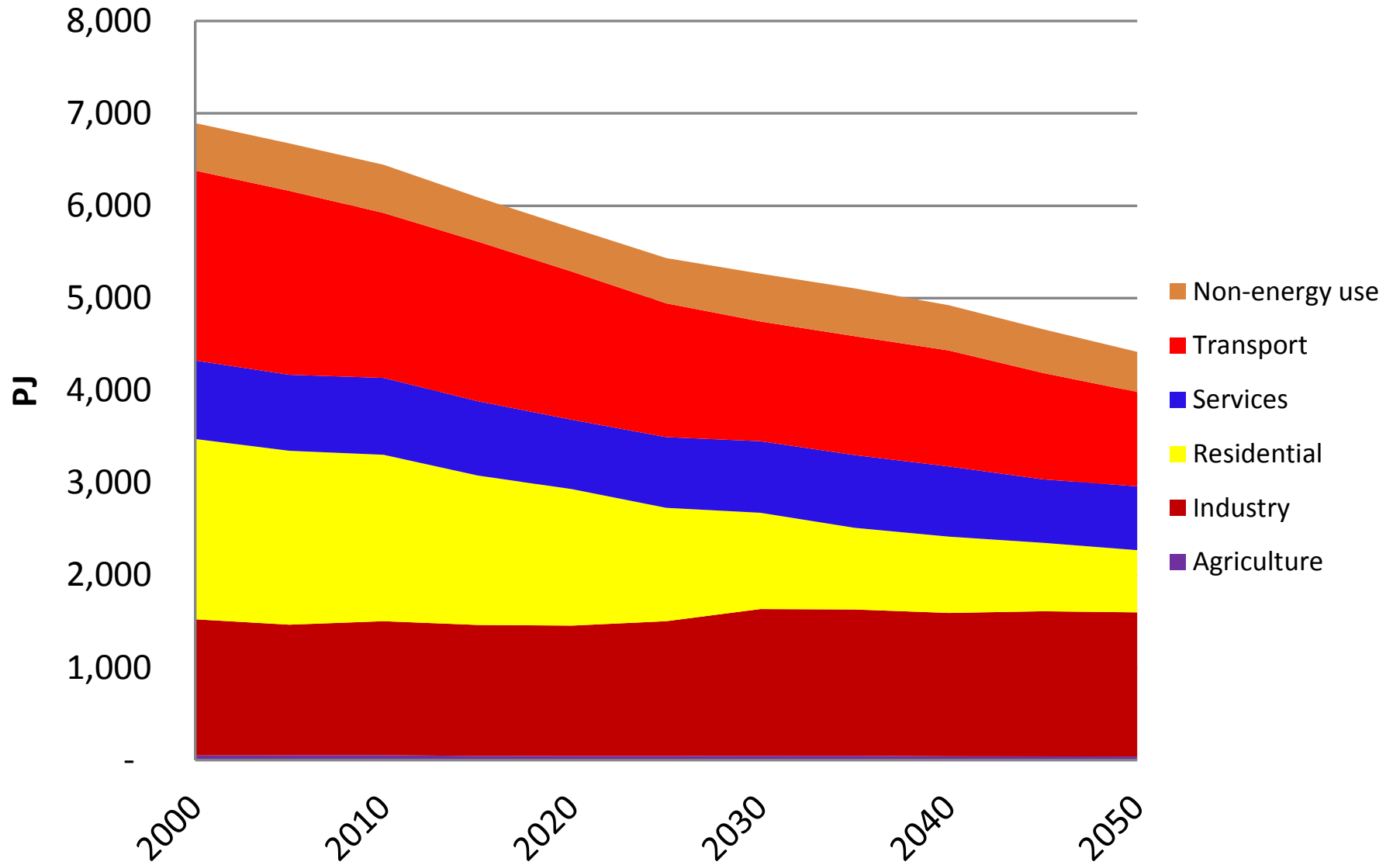
# Primary Energy Demand (PJ)



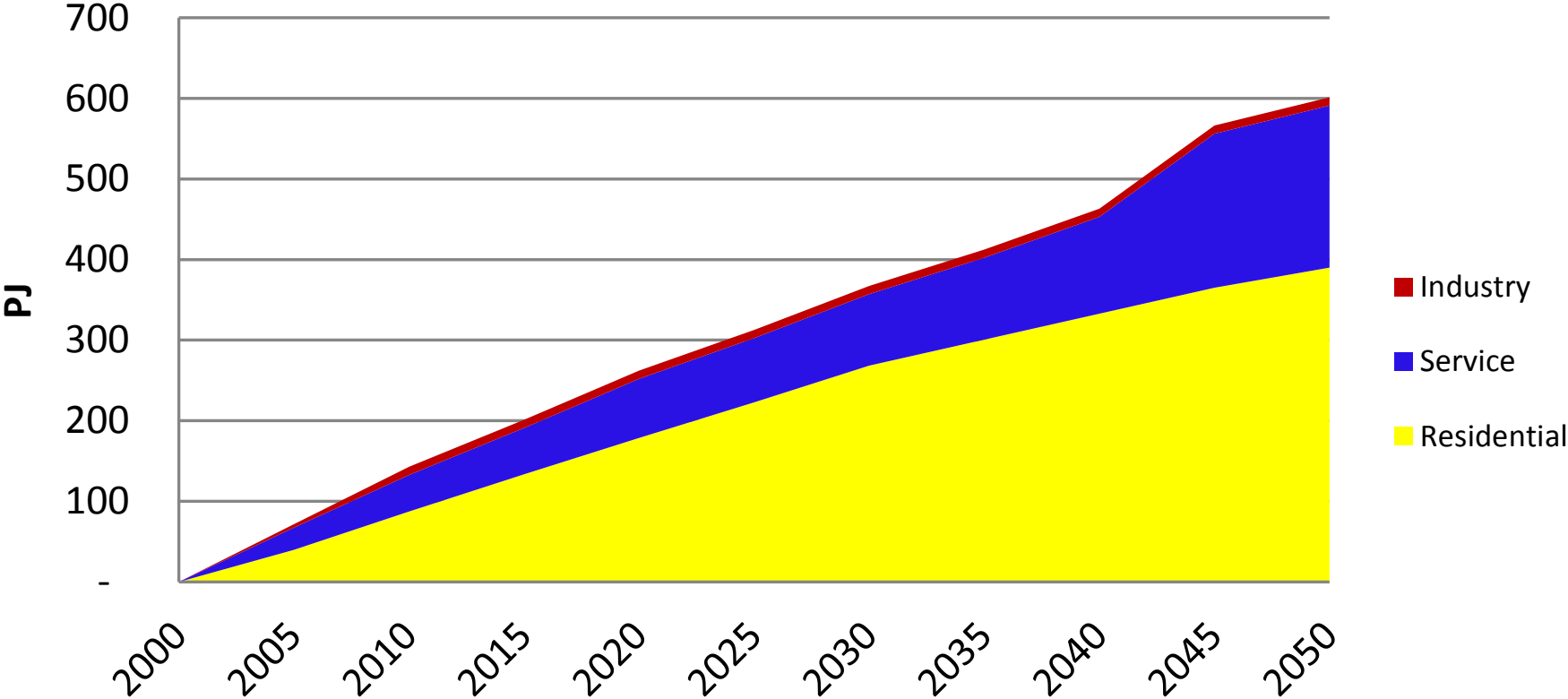
### Final Energy demand by fuel (PJ)



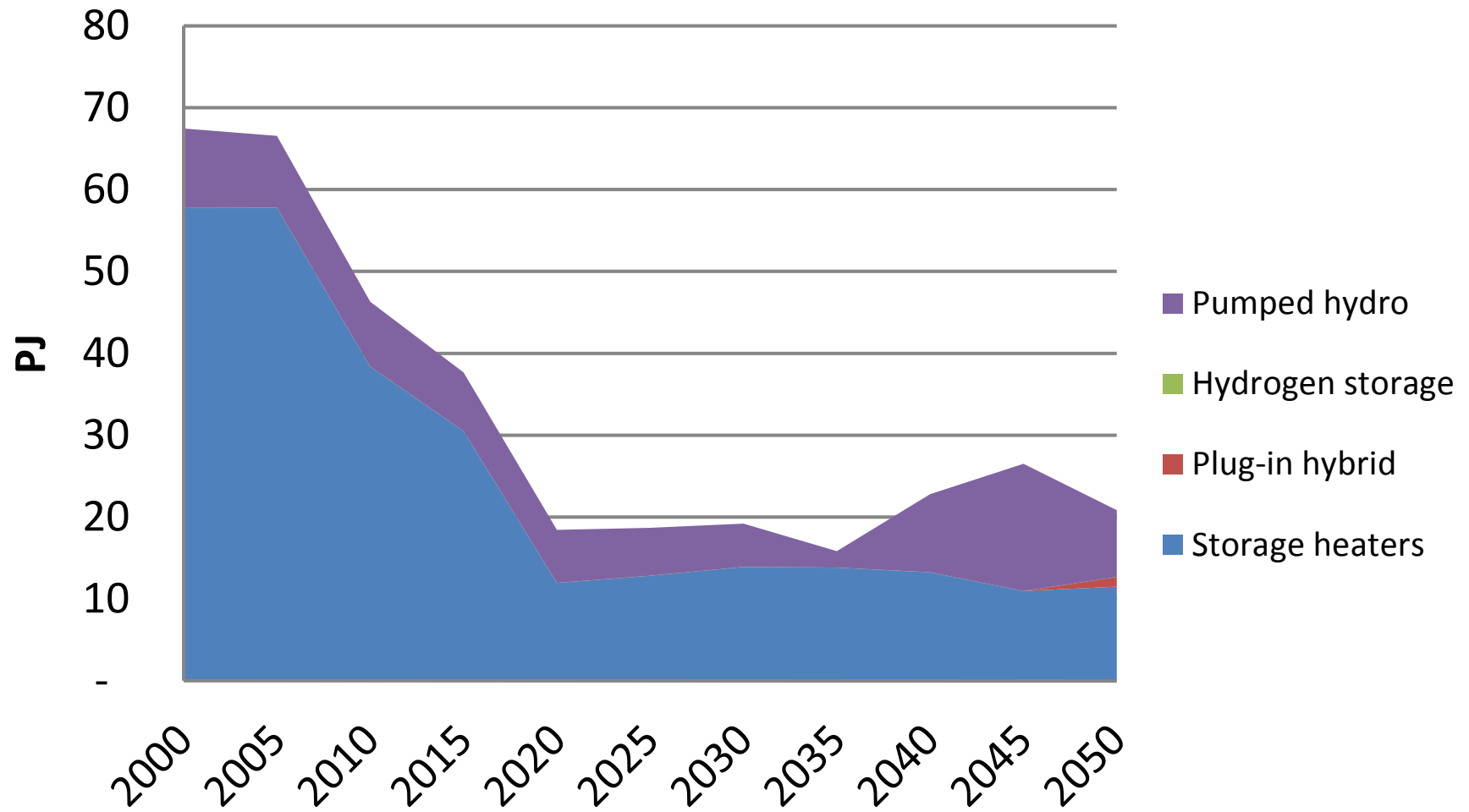
# Final Energy demand by Sector



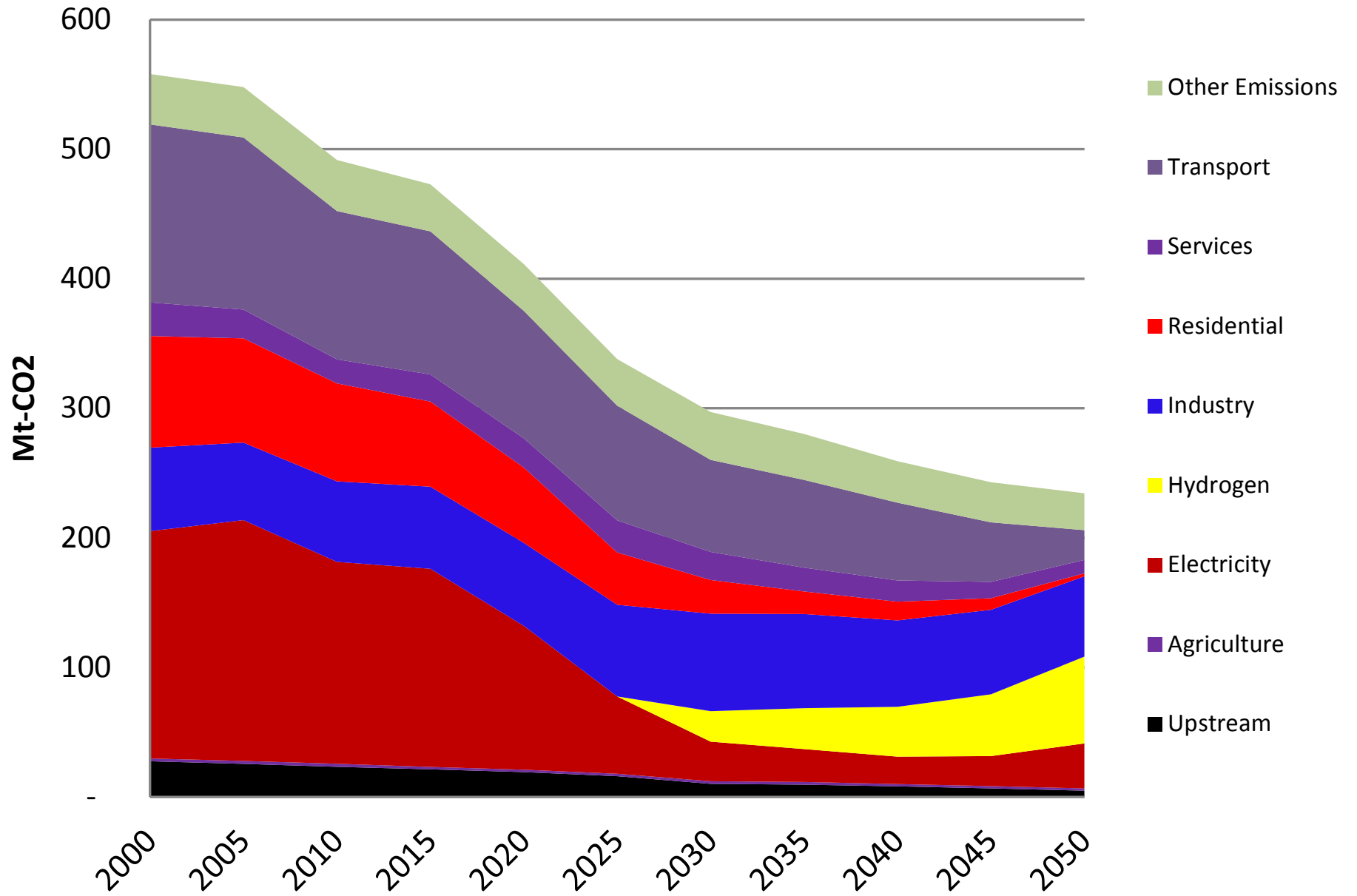
# Use of conservation



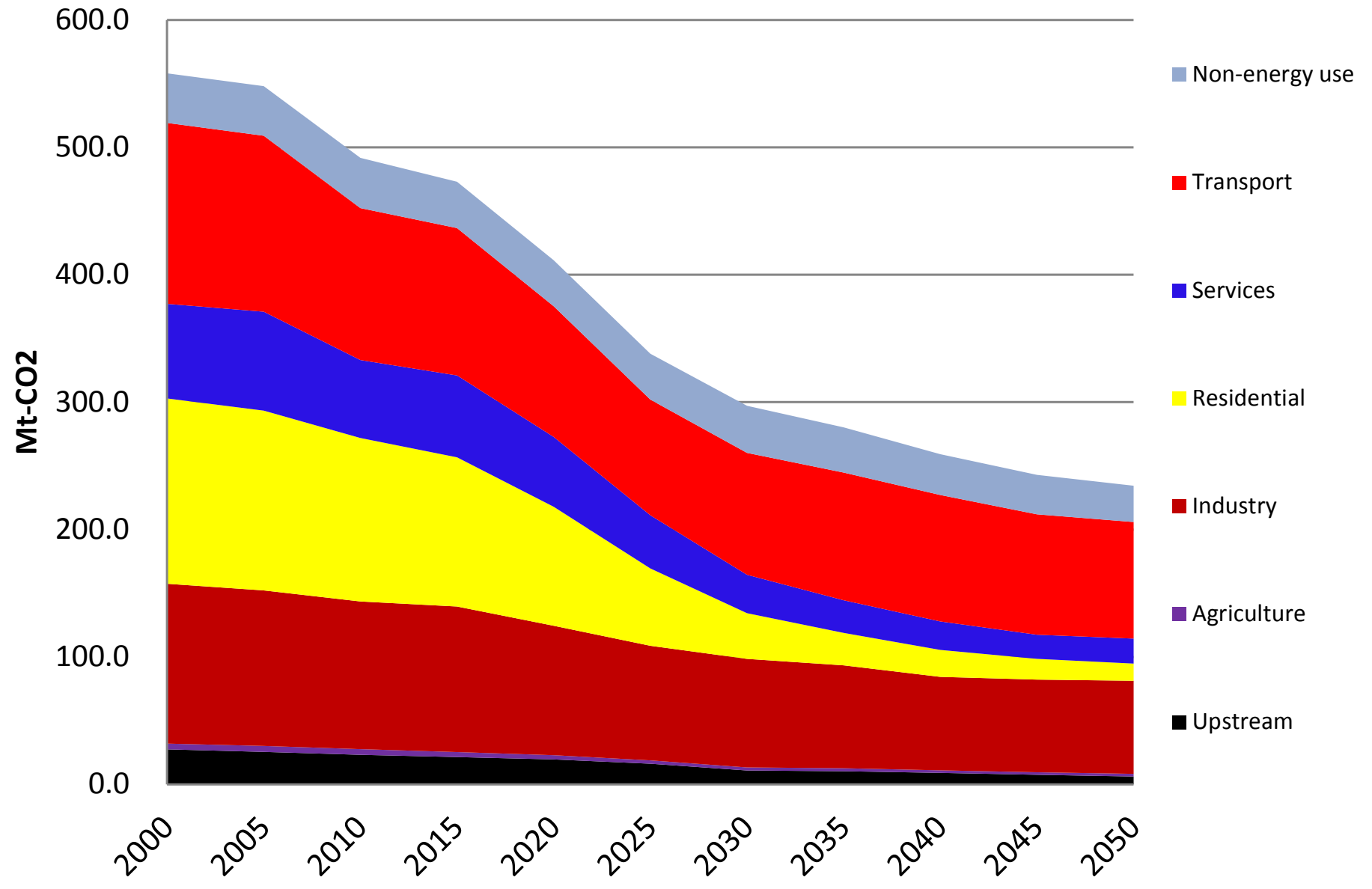
# Electricity storage



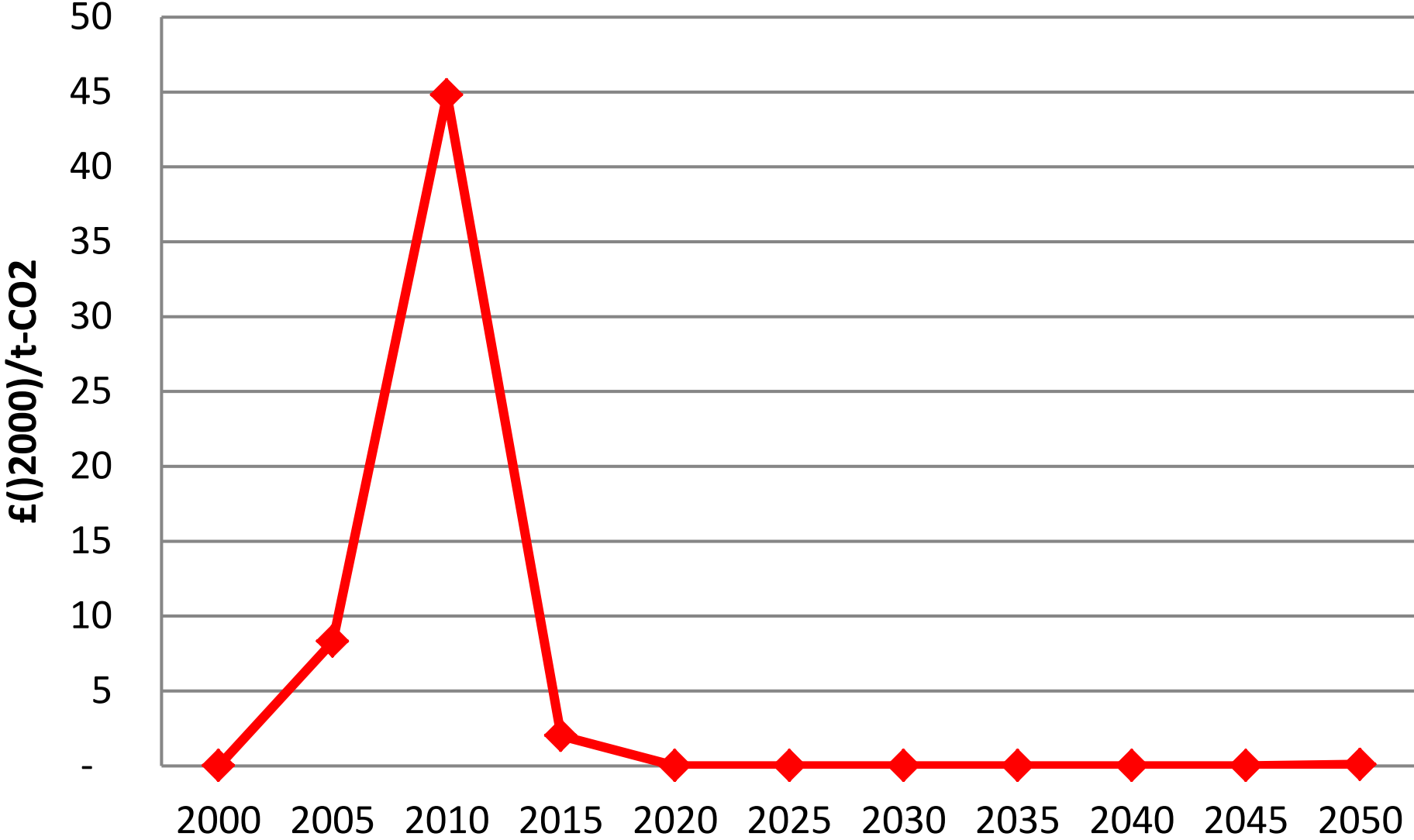
# Sectoral Emissions



# Enduse Sectoral Emissions

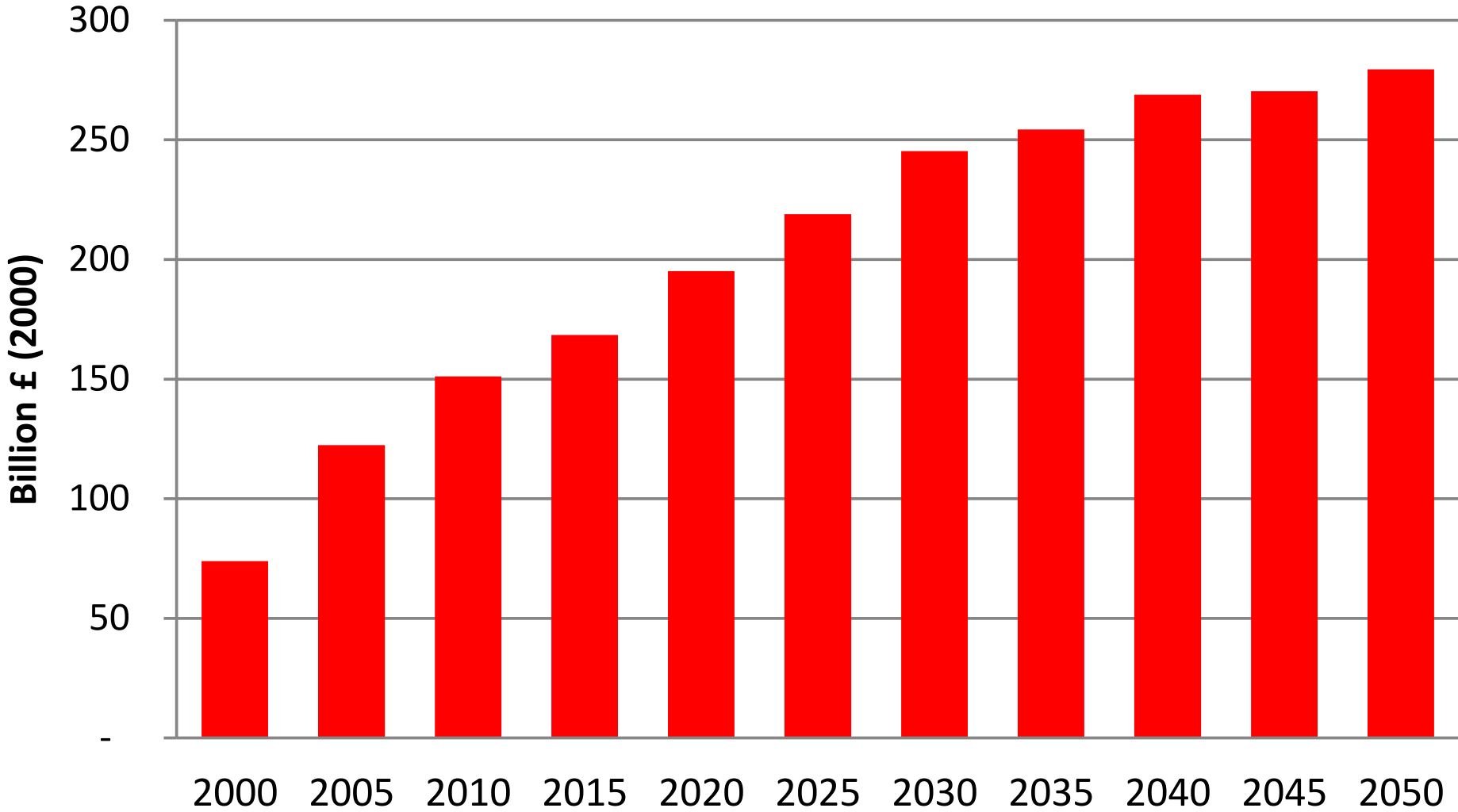


# Marginal cost of CO2

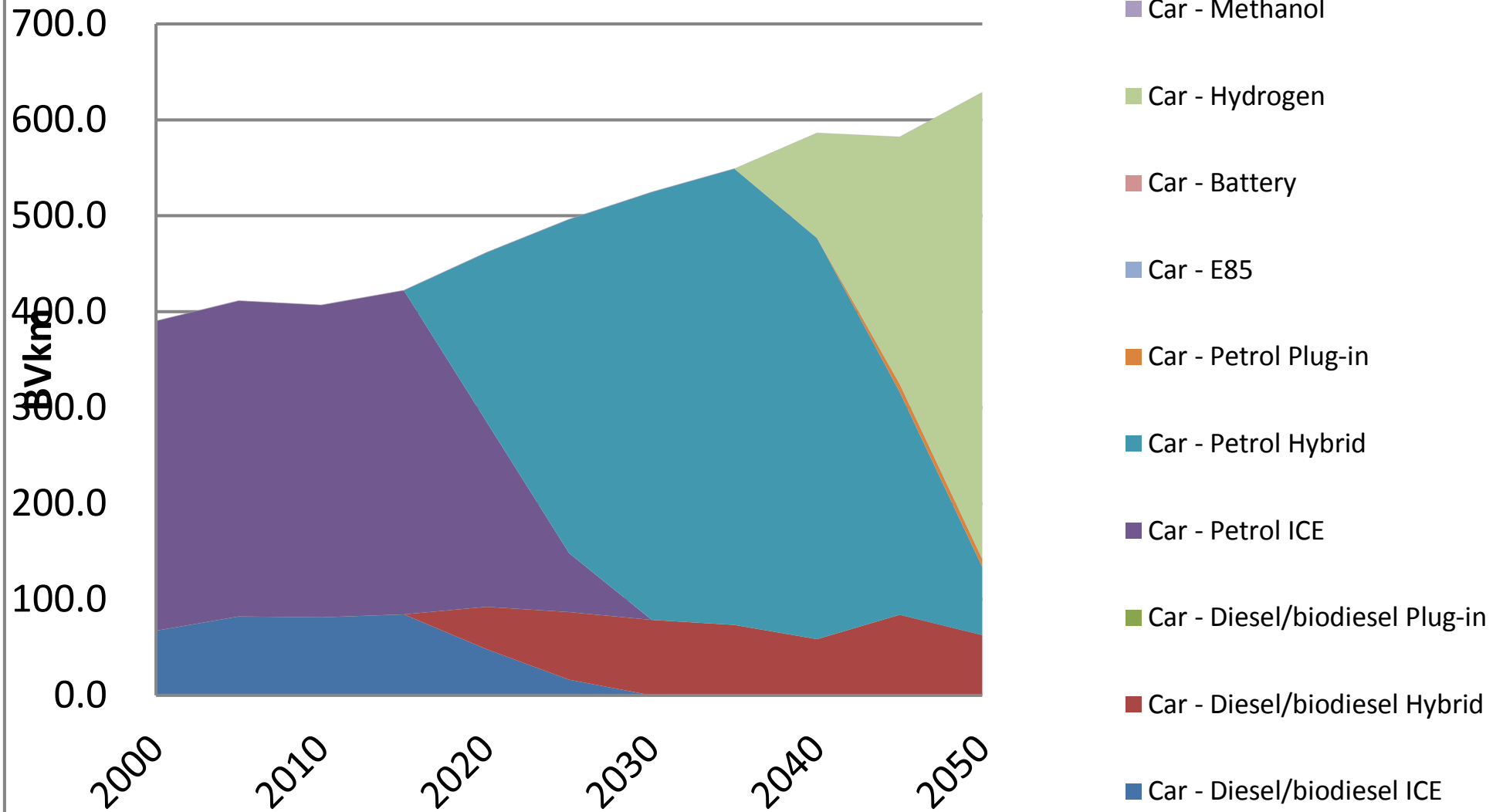




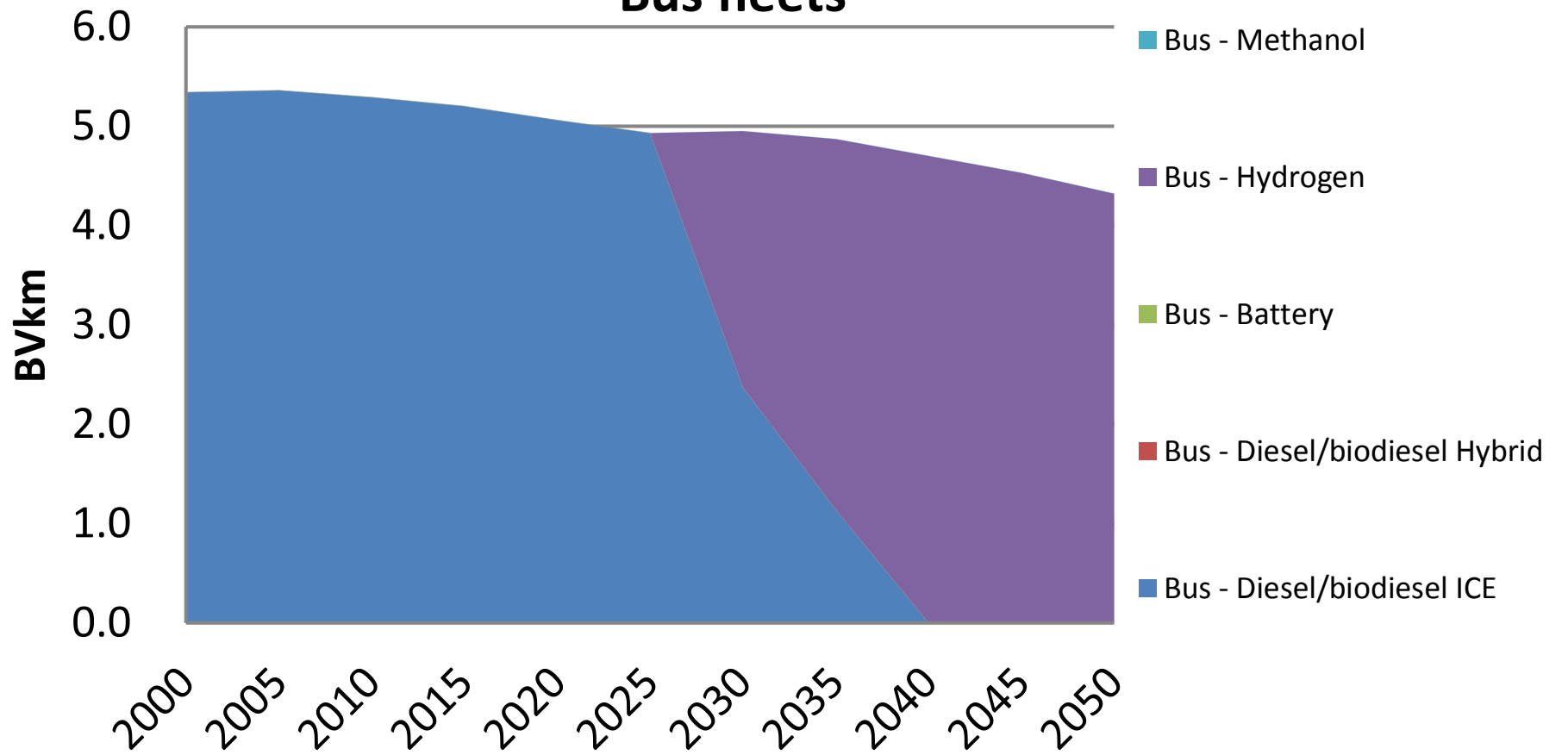
# Undiscounted energy system cost



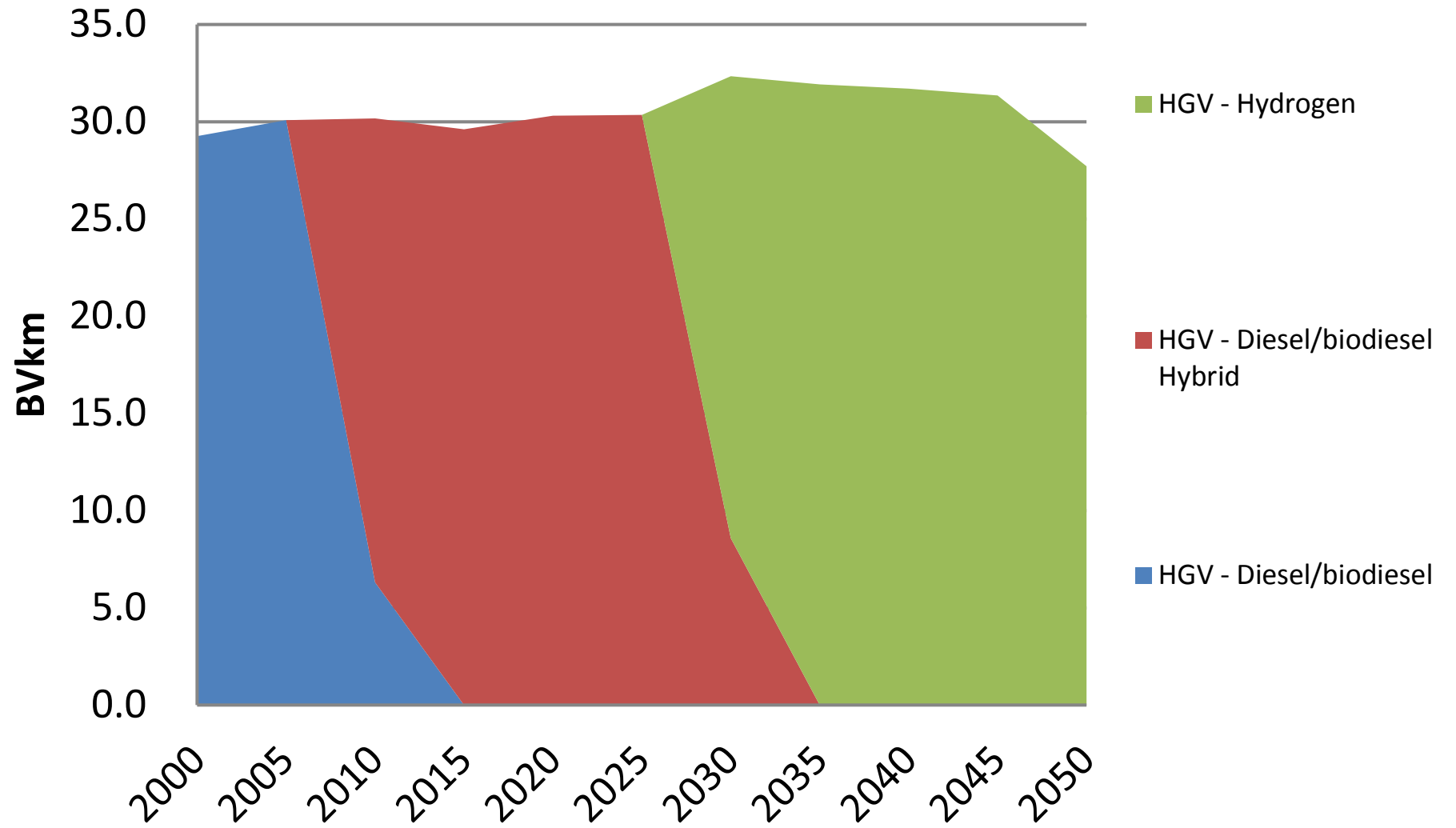
# Car fleets



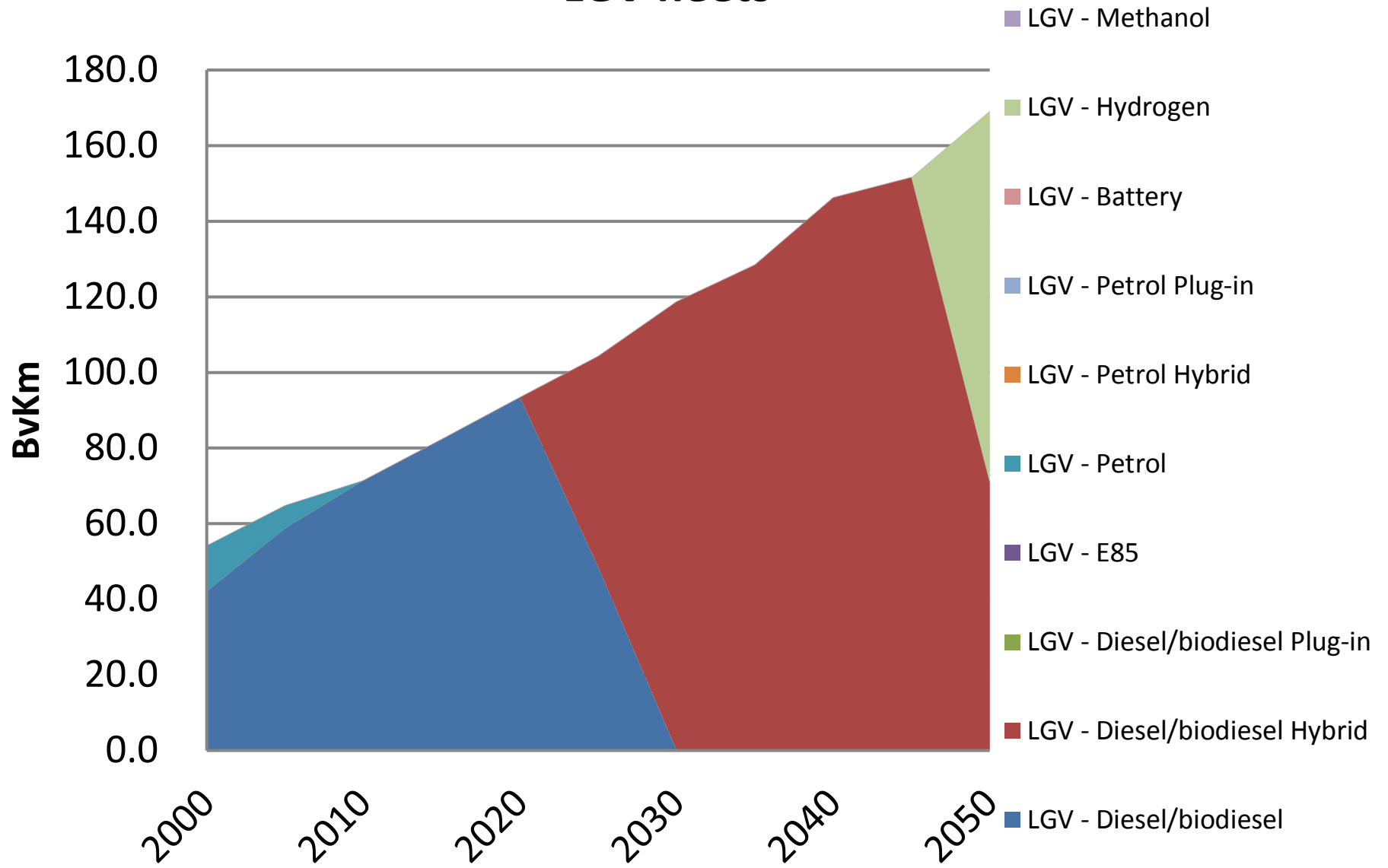
# Bus fleets



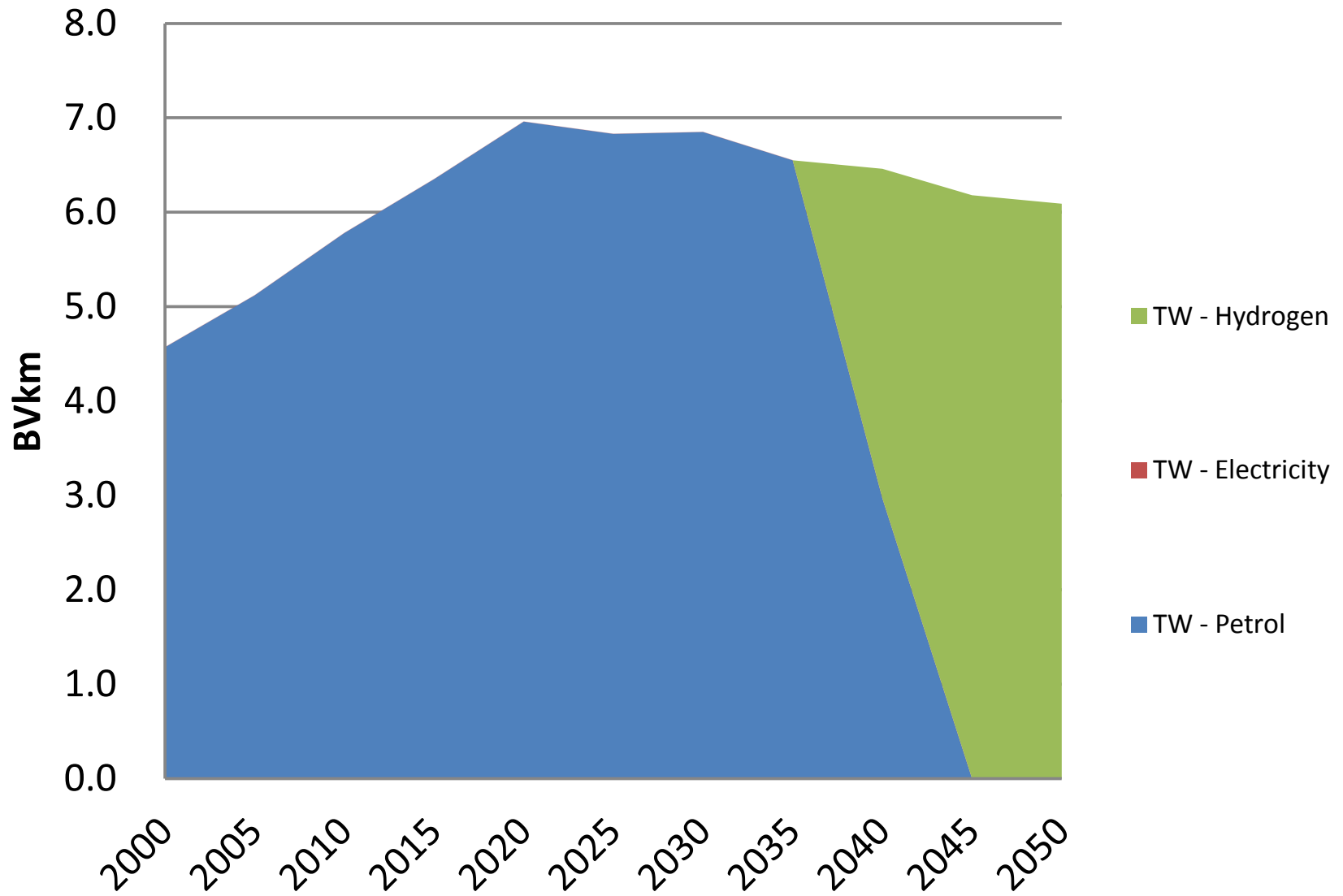
# HGV fleet



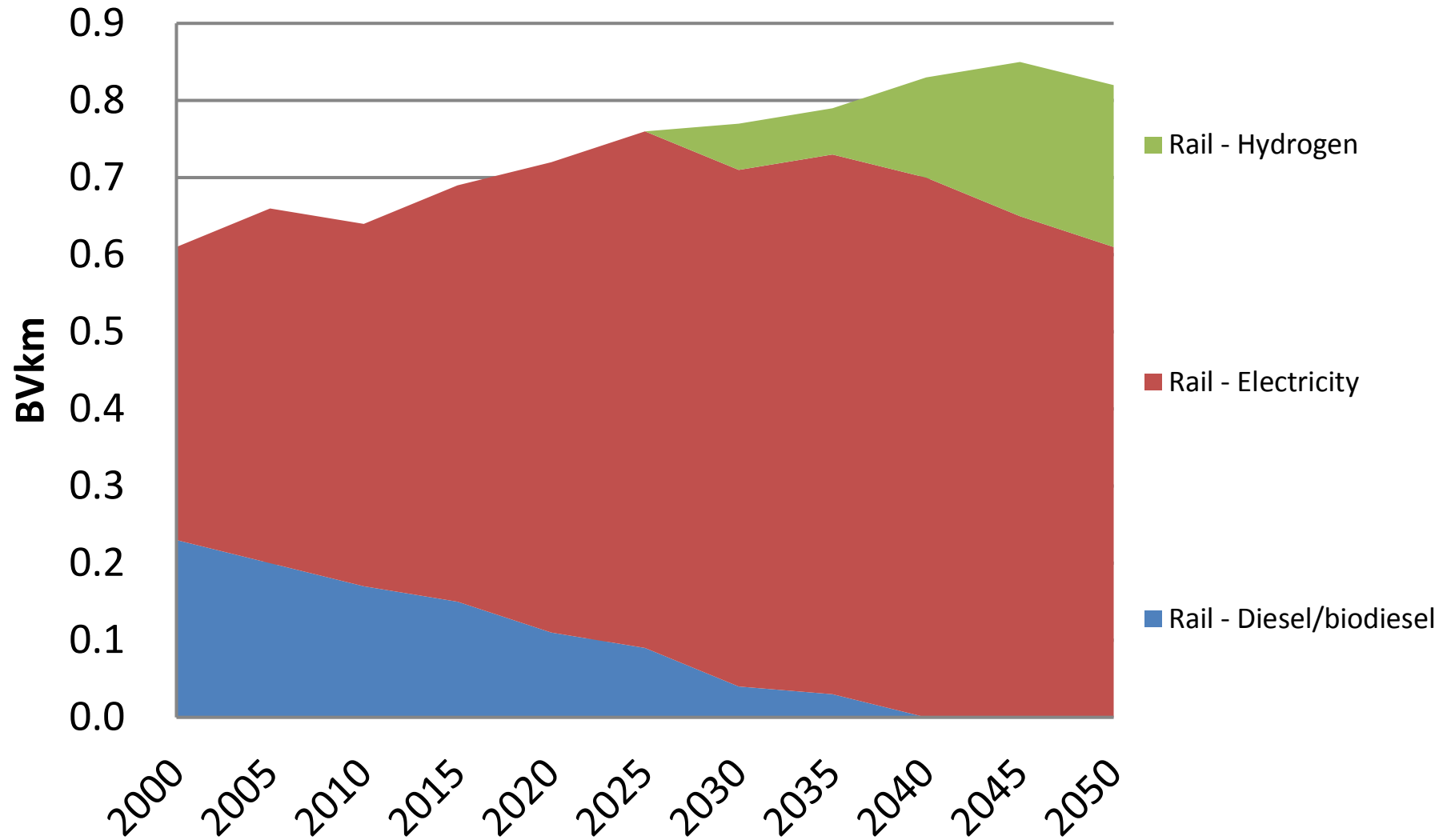
# LGV fleets



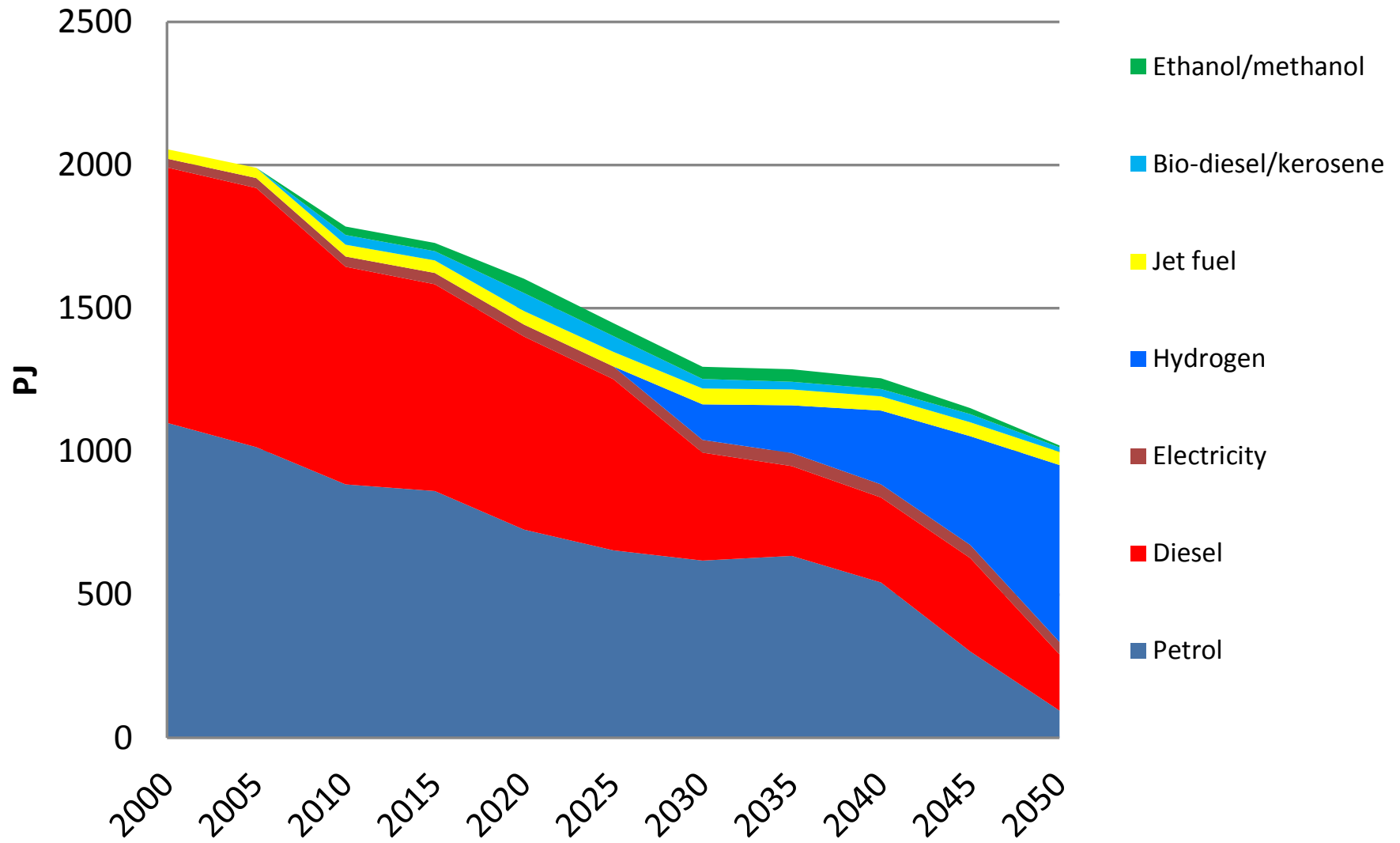
## Two-wheelers fleet



# Rail fleet

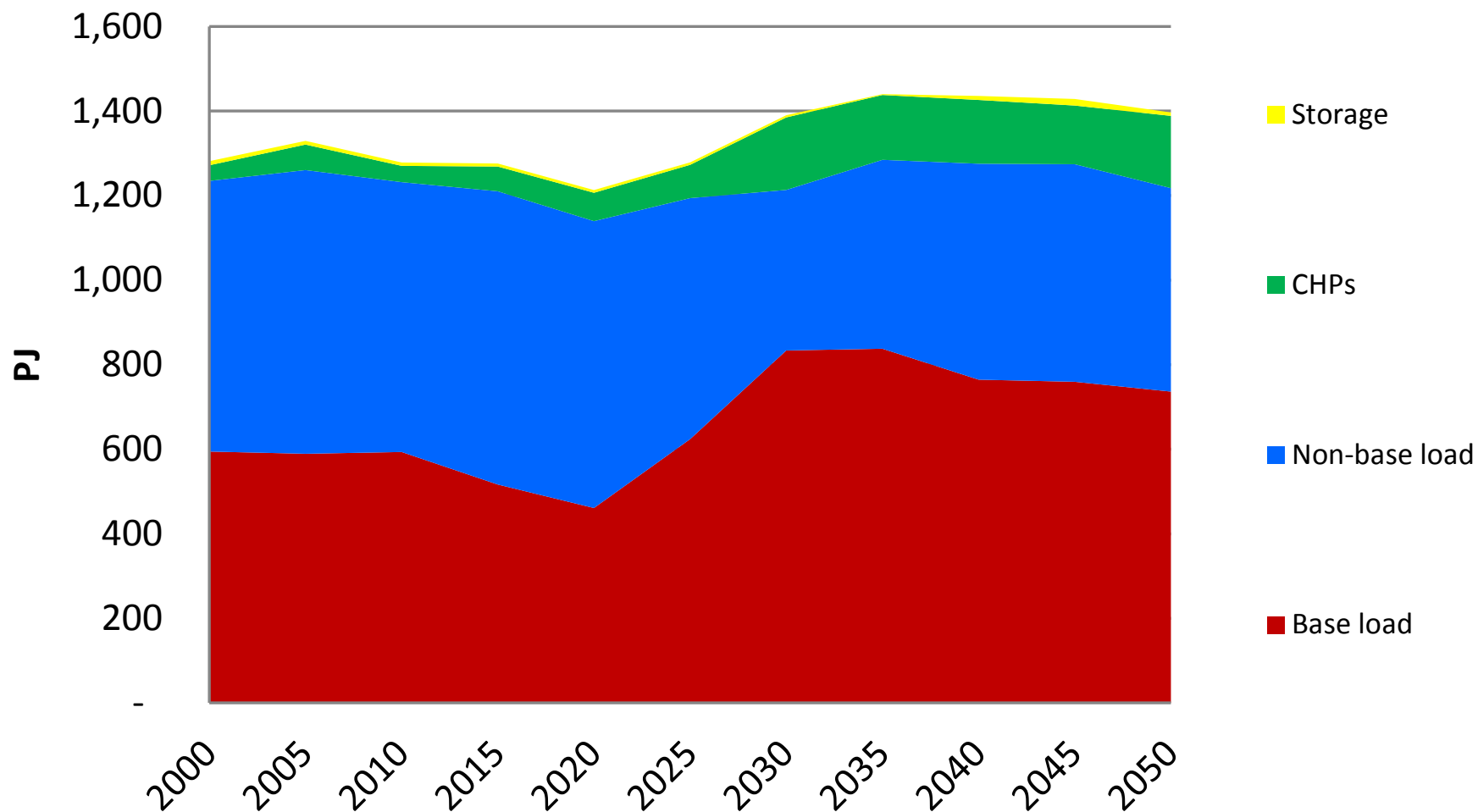


# Transport fuel demand

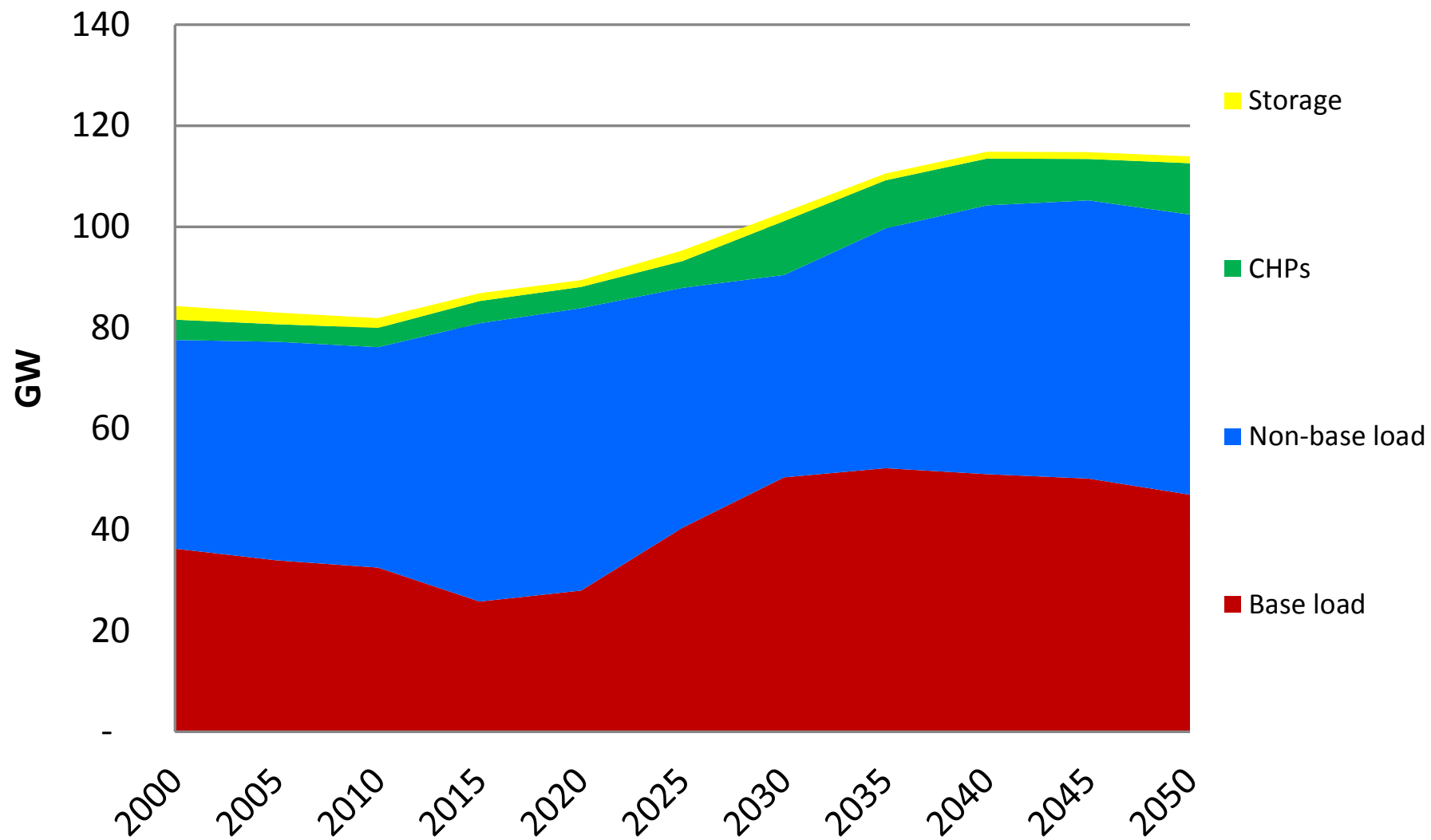




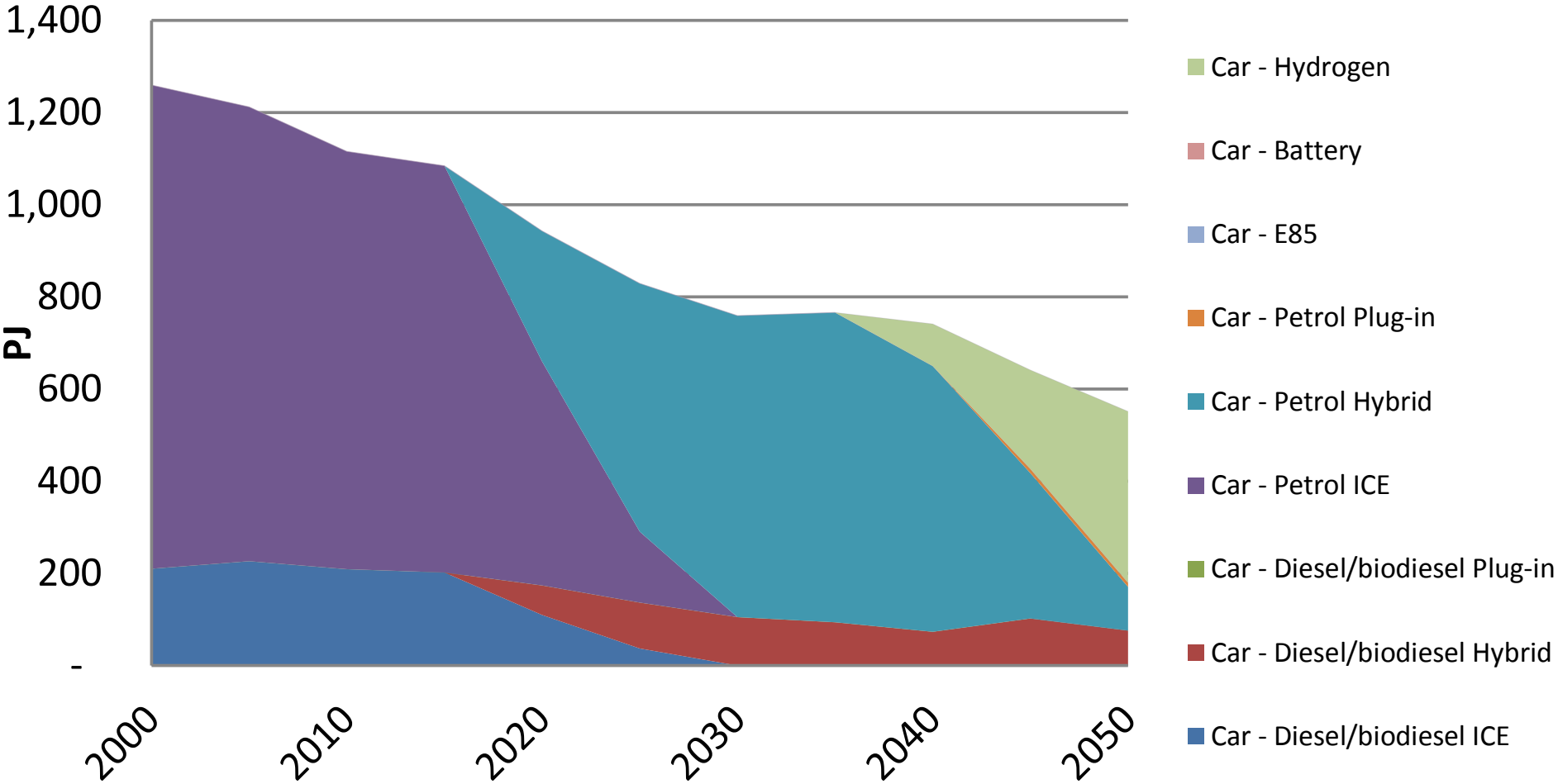
# Generation by plant type



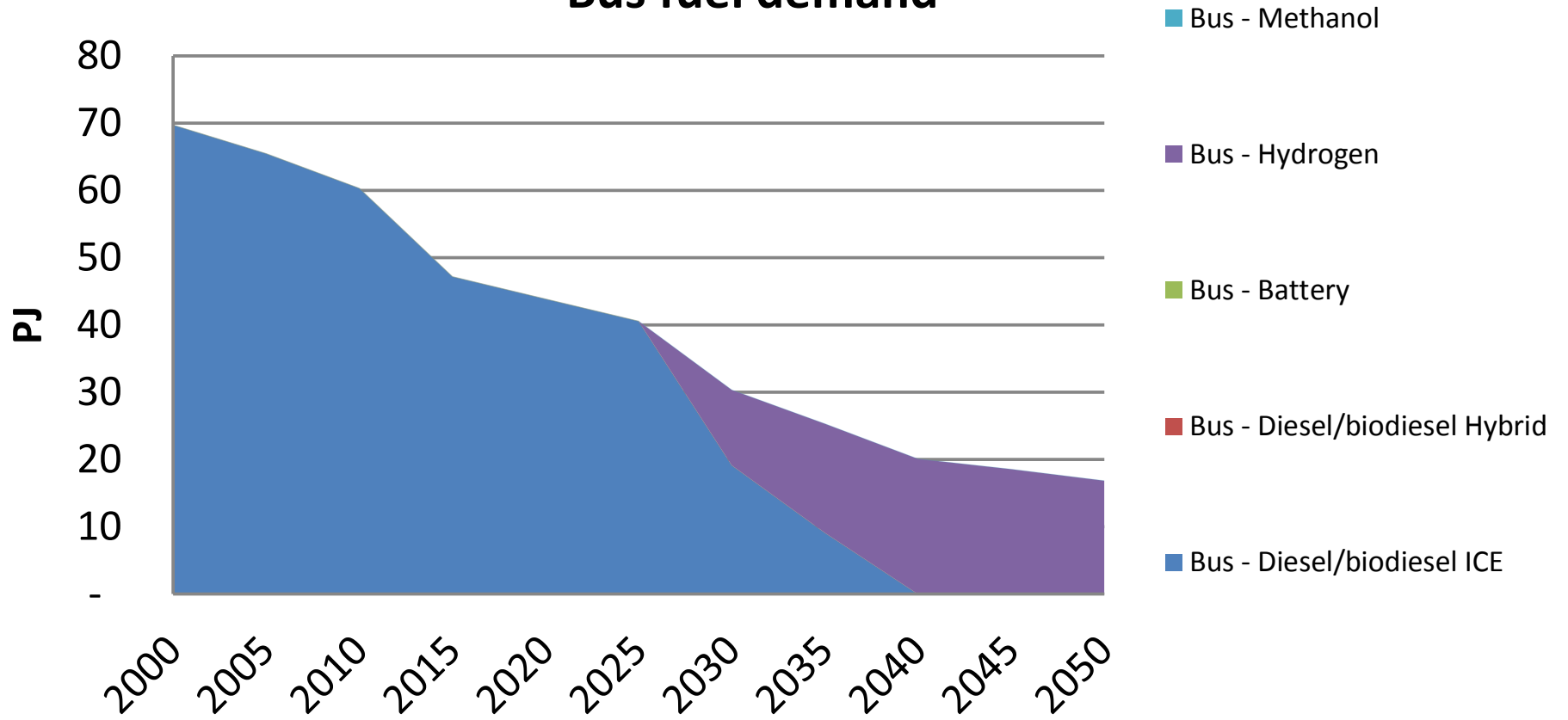
## Installed capacity by plant type



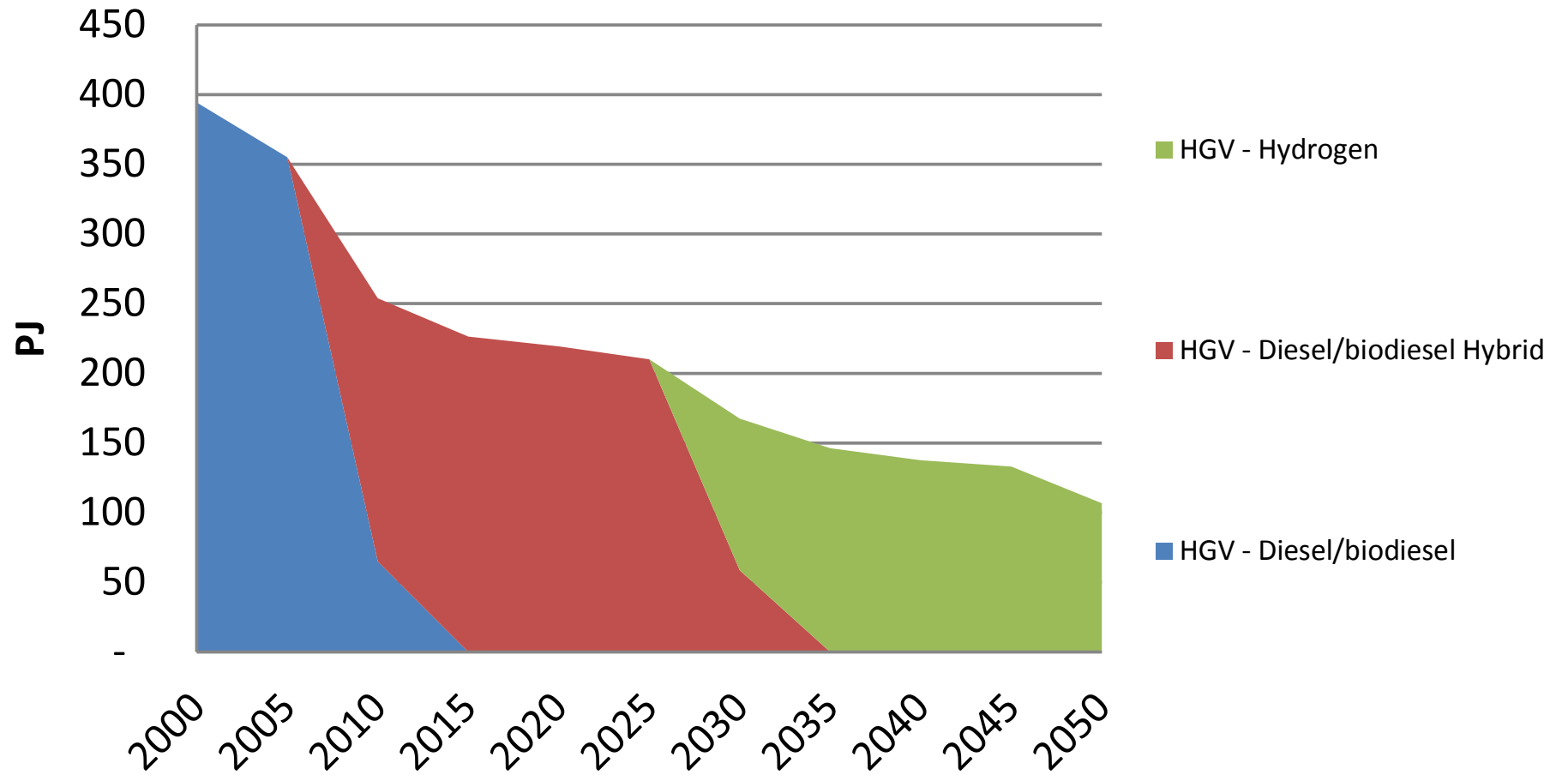
# Car fuel demand



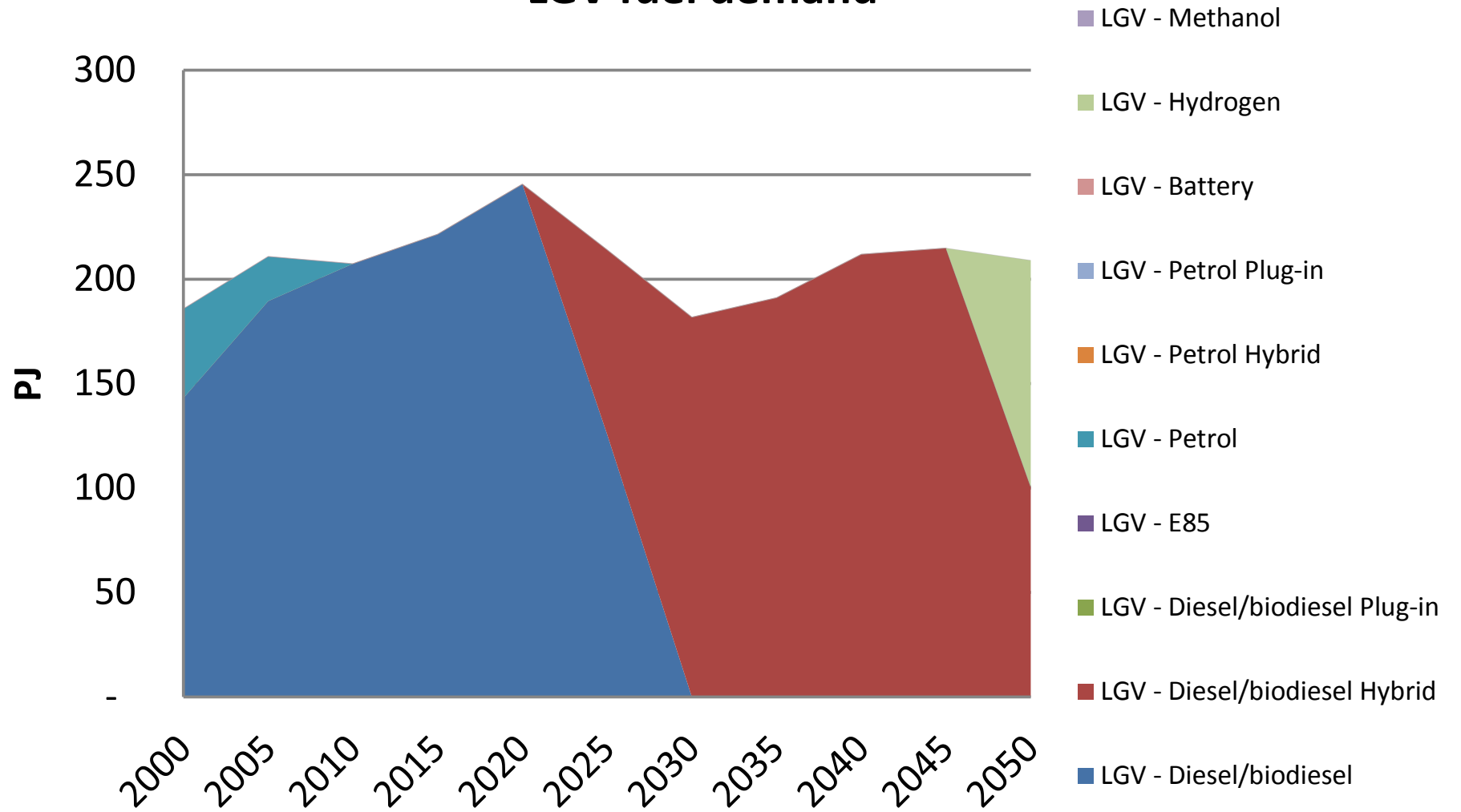
# Bus fuel demand



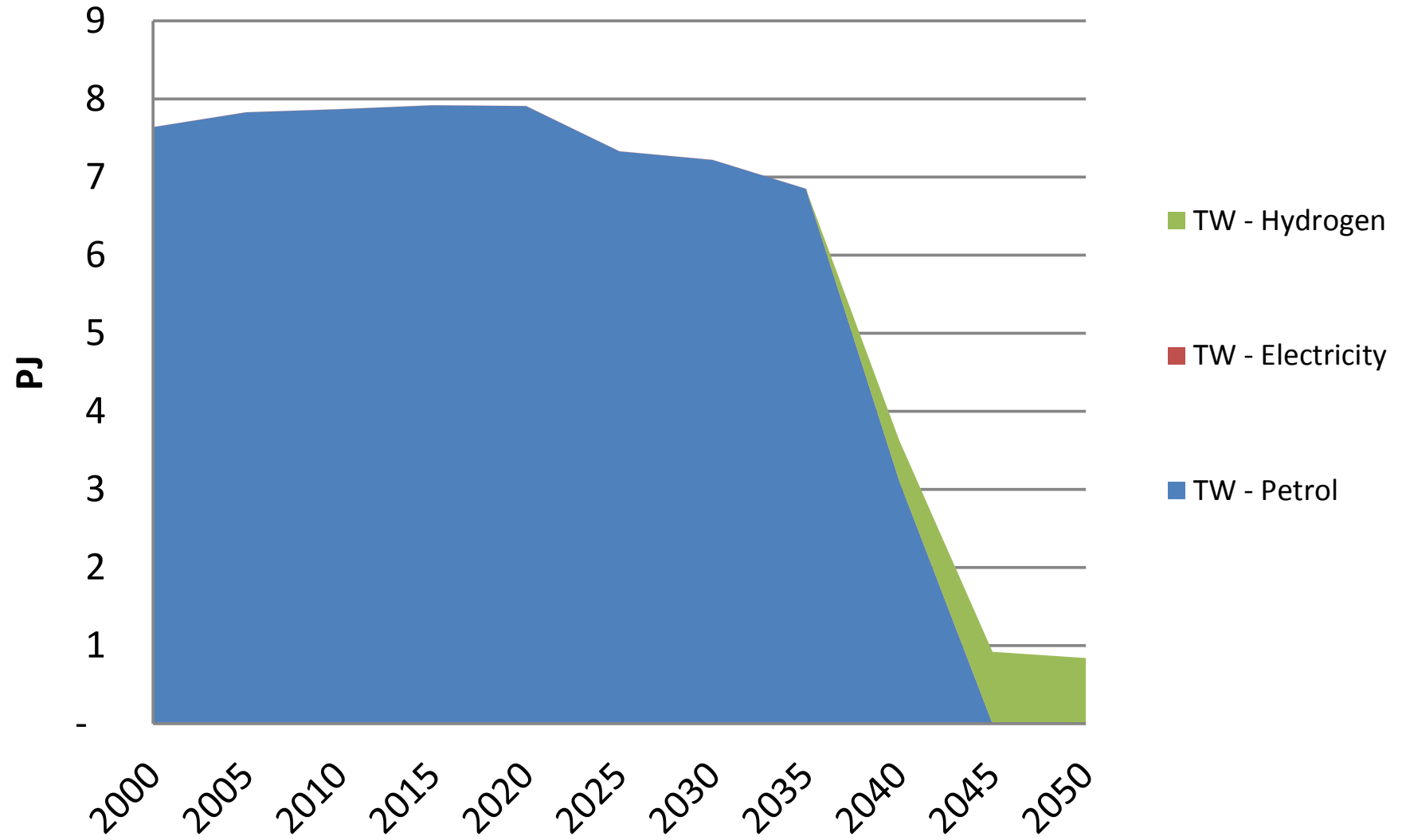
# HGV fuel demand



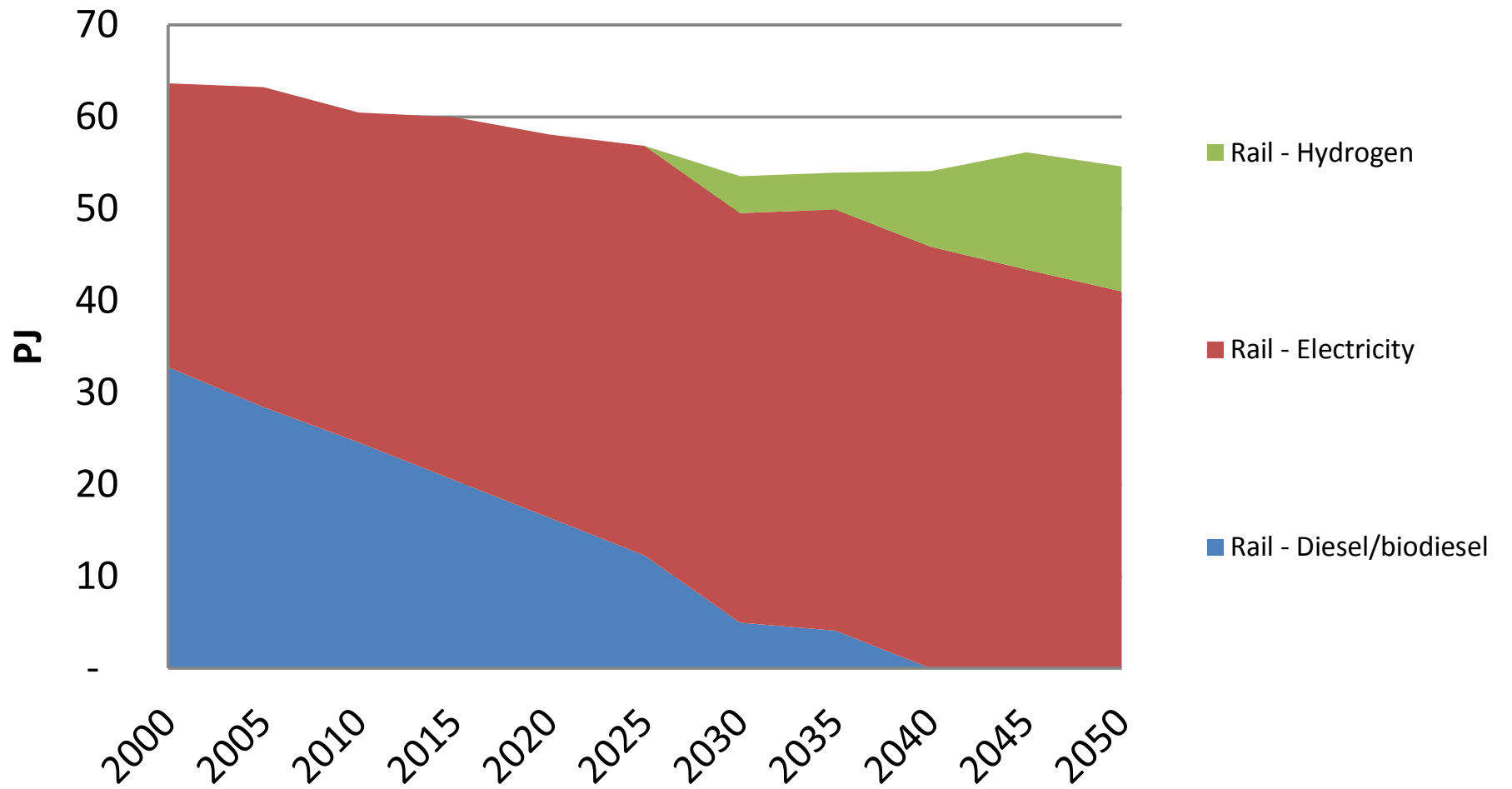
# LGV fuel demand



## Two-wheeler fuel demand

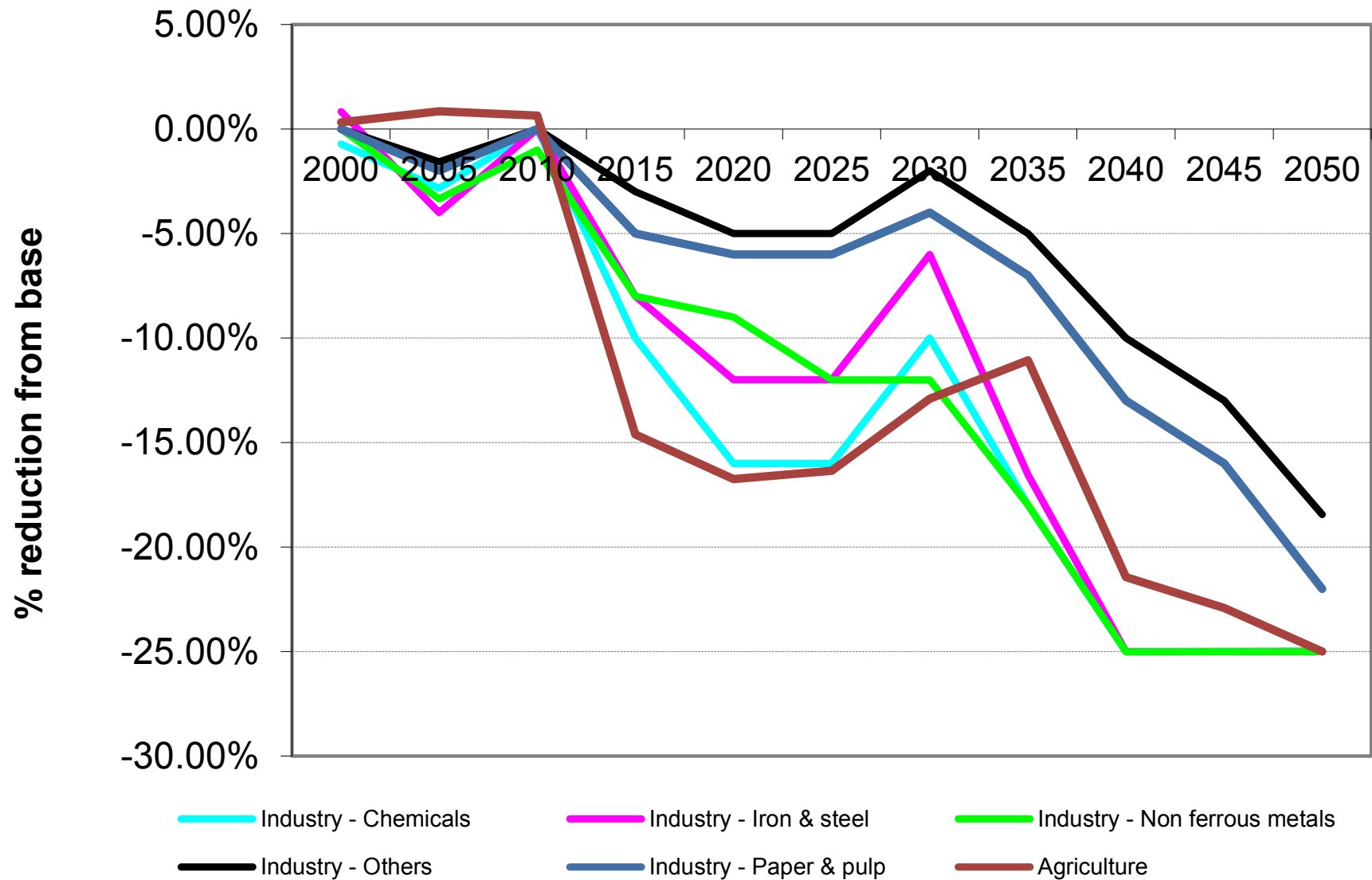


# Rail fuel demand

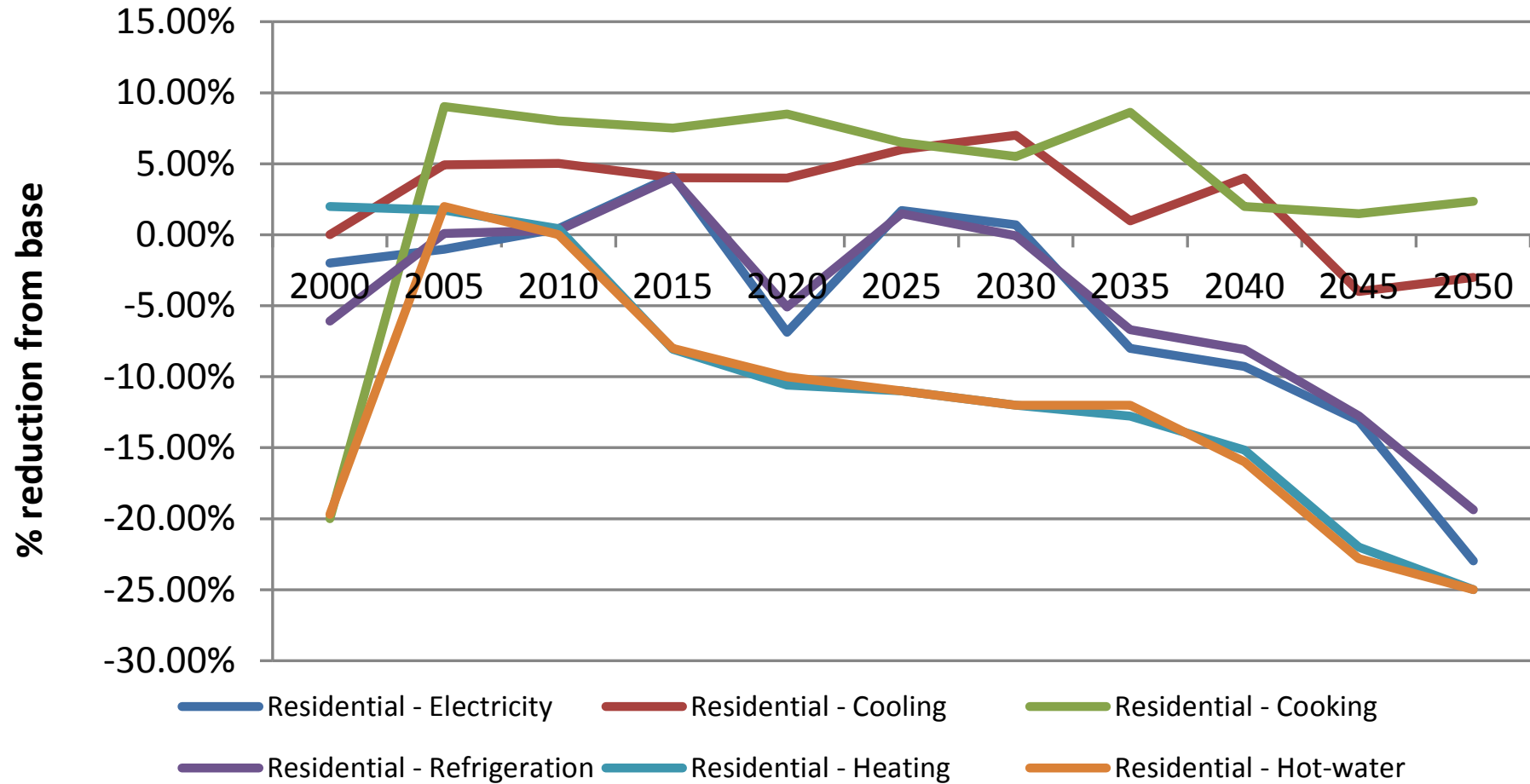




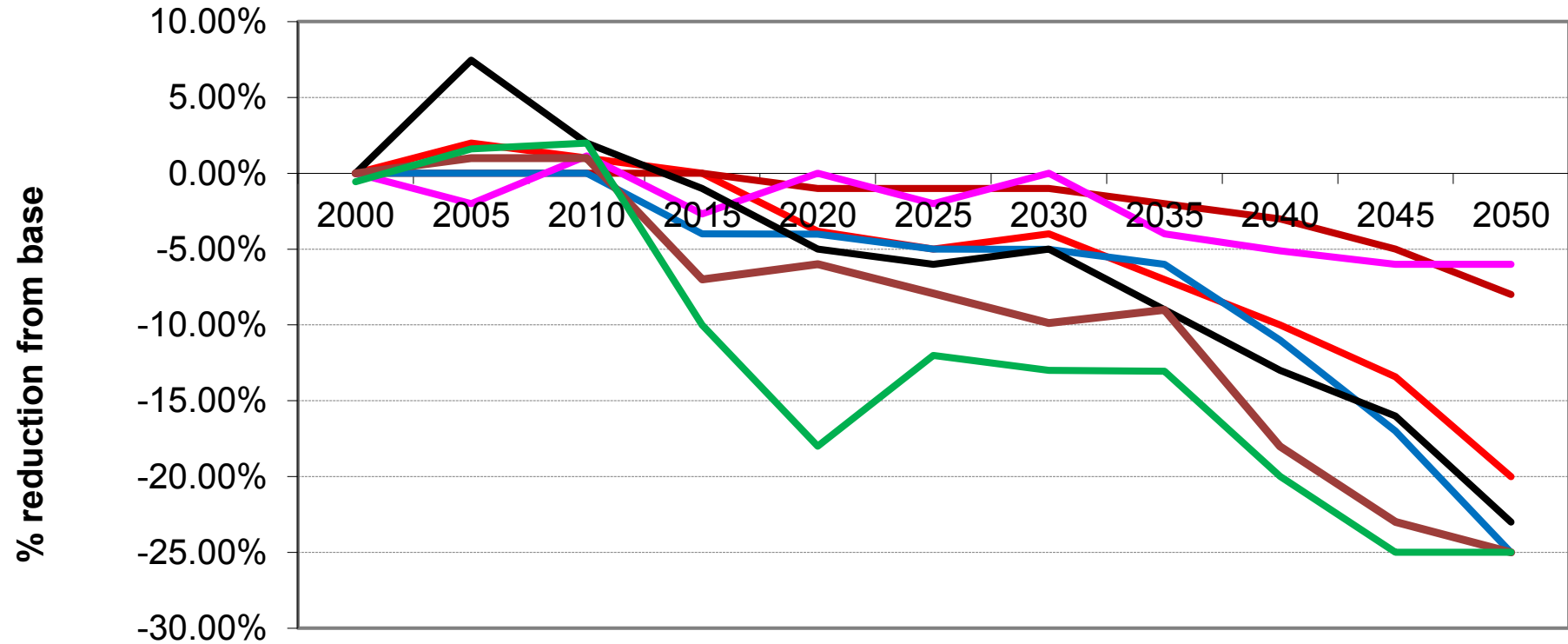
## Industry and agriculture demand reductions



## Residential demand reductions

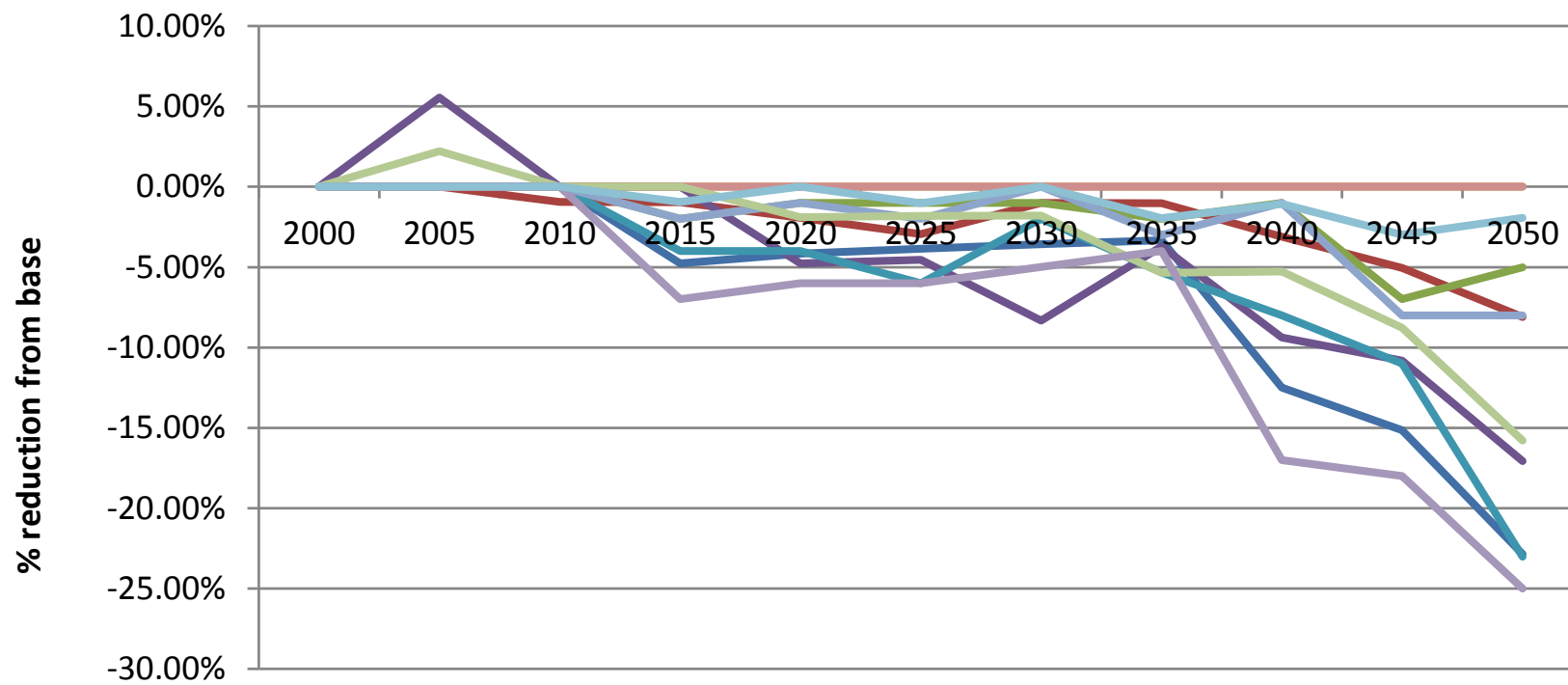


### Service demand reductions



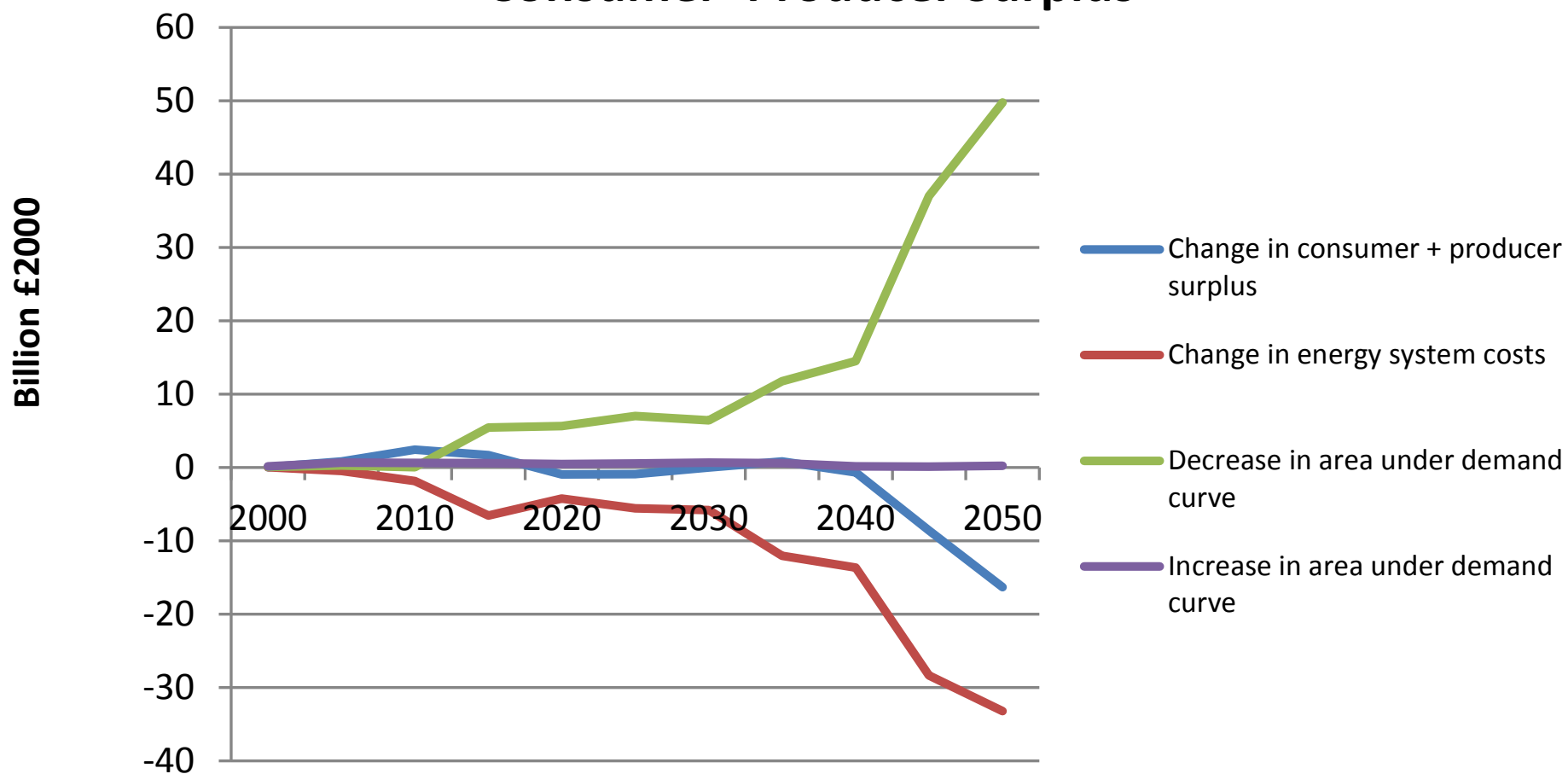
- Services - Lighting
- Services - Refrigeration
- Services - Cooking
- Services - Cooling
- Services - Other electrical
- Services - Heating
- Services - Hot-water

## Transport demand reduction

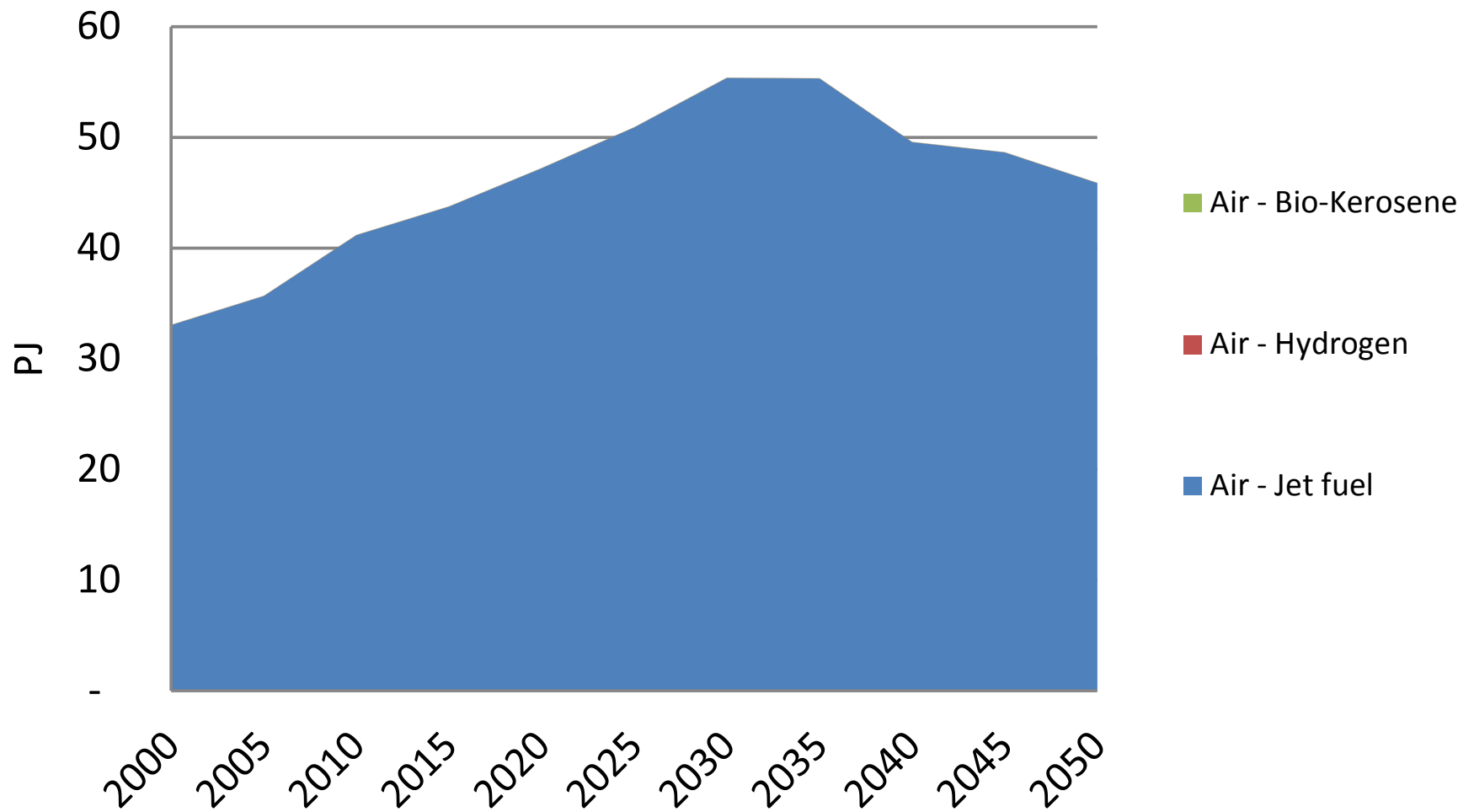


- Transport - Air domestic
- Transport - Bus
- Transport - Car
- Transport - Rail freight
- Transport - HGV
- Transport - Air International
- Transport - LGV
- Transport - Int'l Shipping
- Transport - Rail passenger
- Transport - Shipping
- Transport - Two wheeler

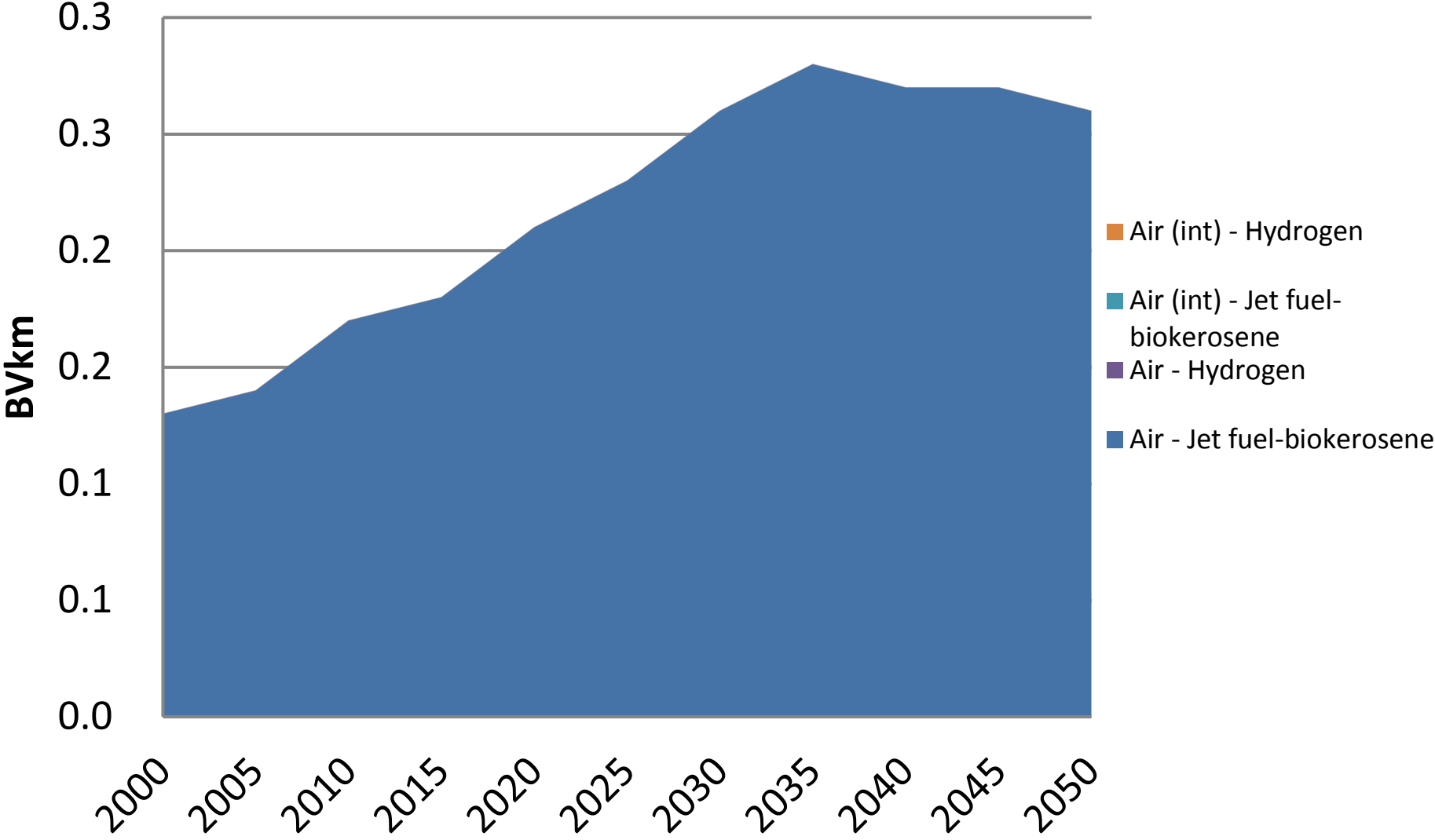
## Consumer+Producer Surplus



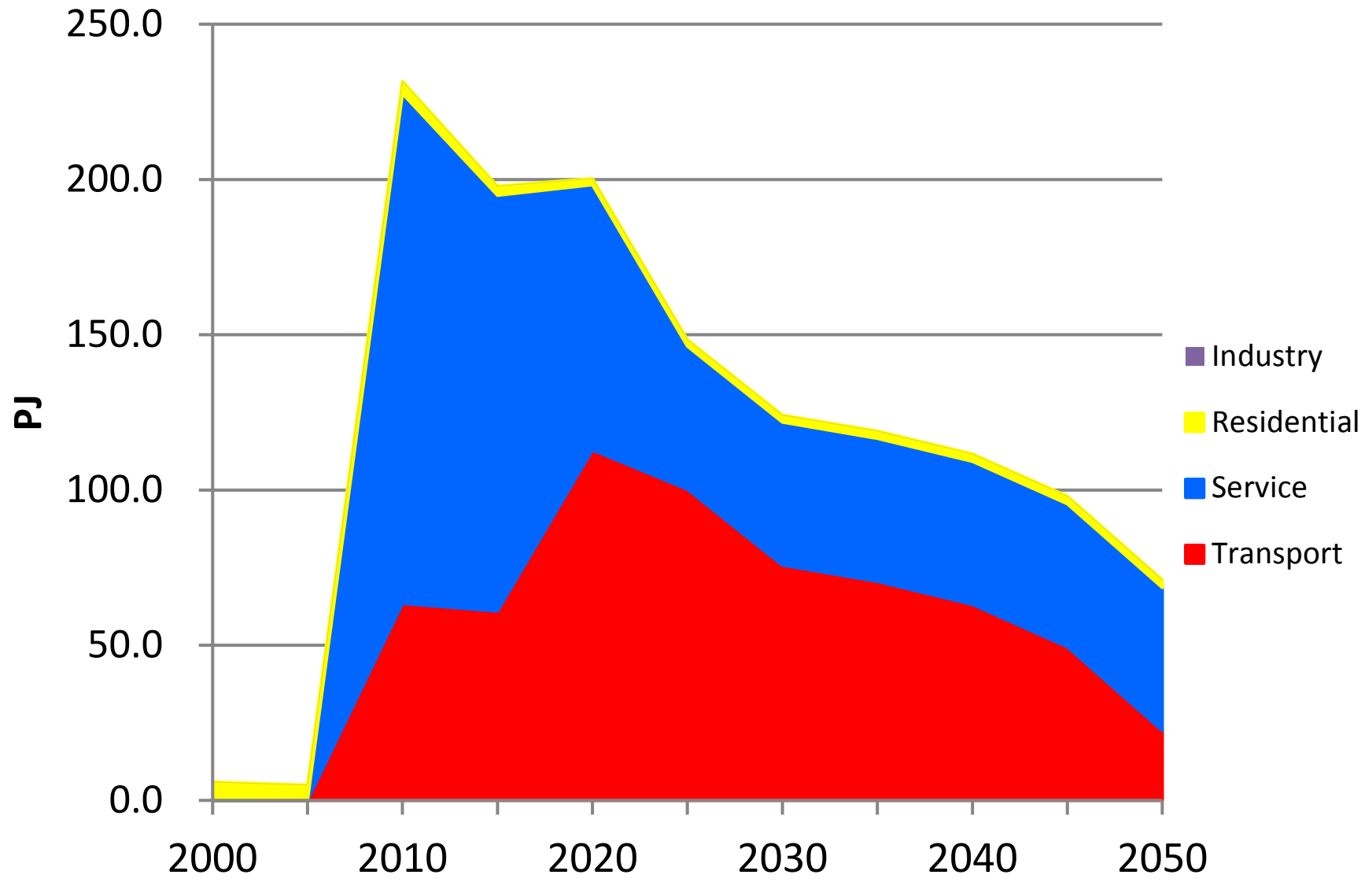
# Aviation fuel demand



# Aviation fleet

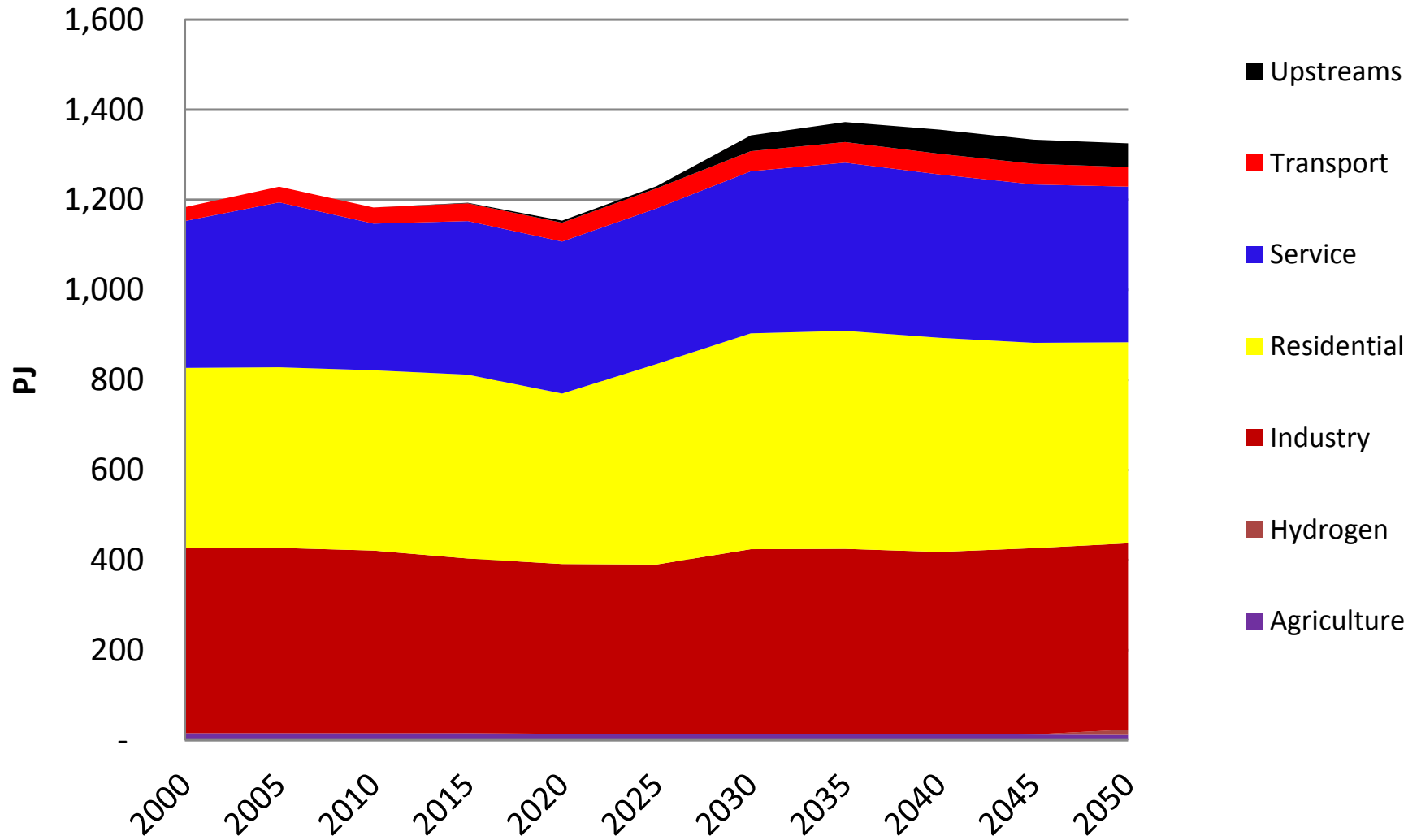


# Bio-products in final energy

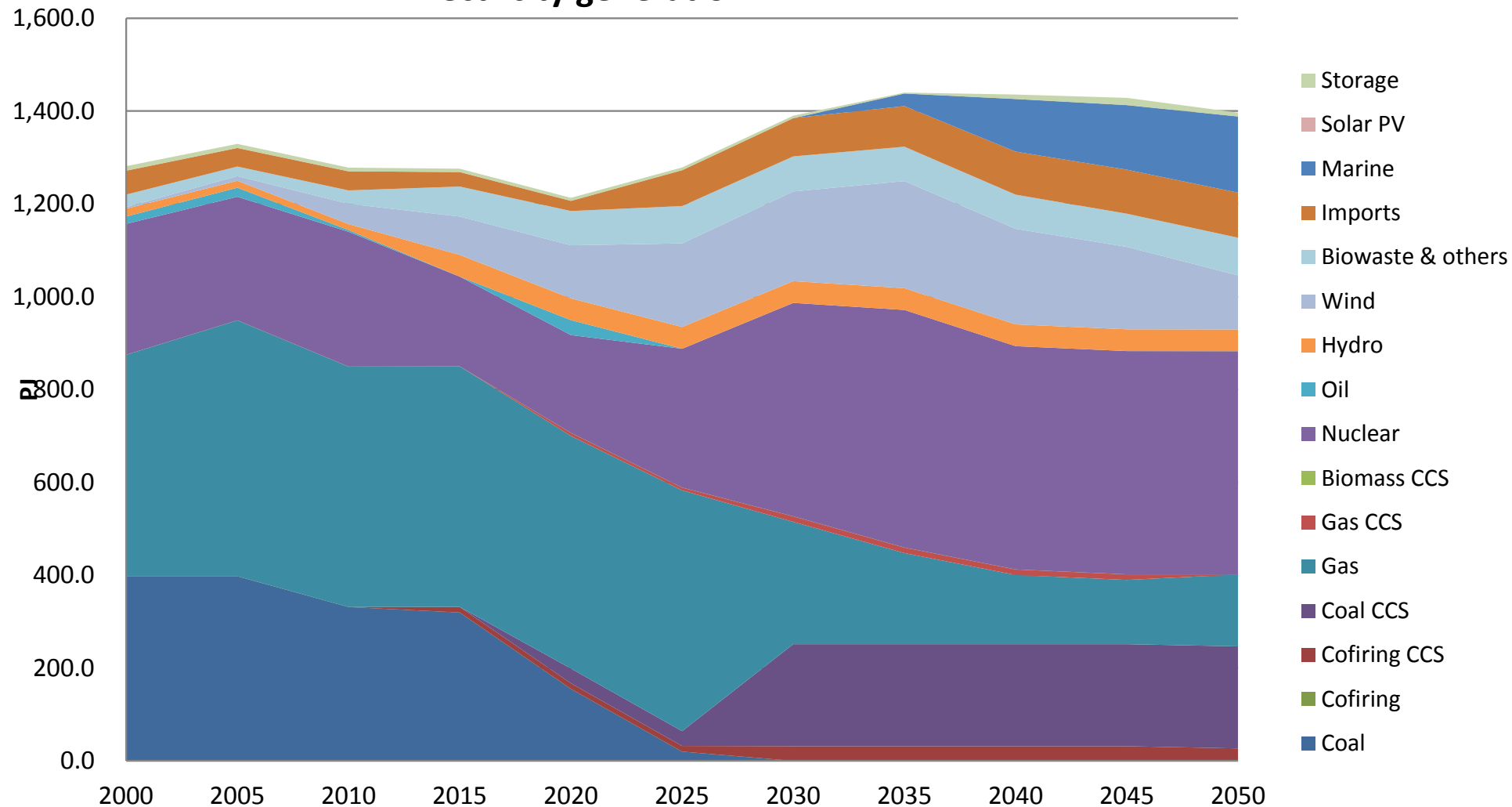




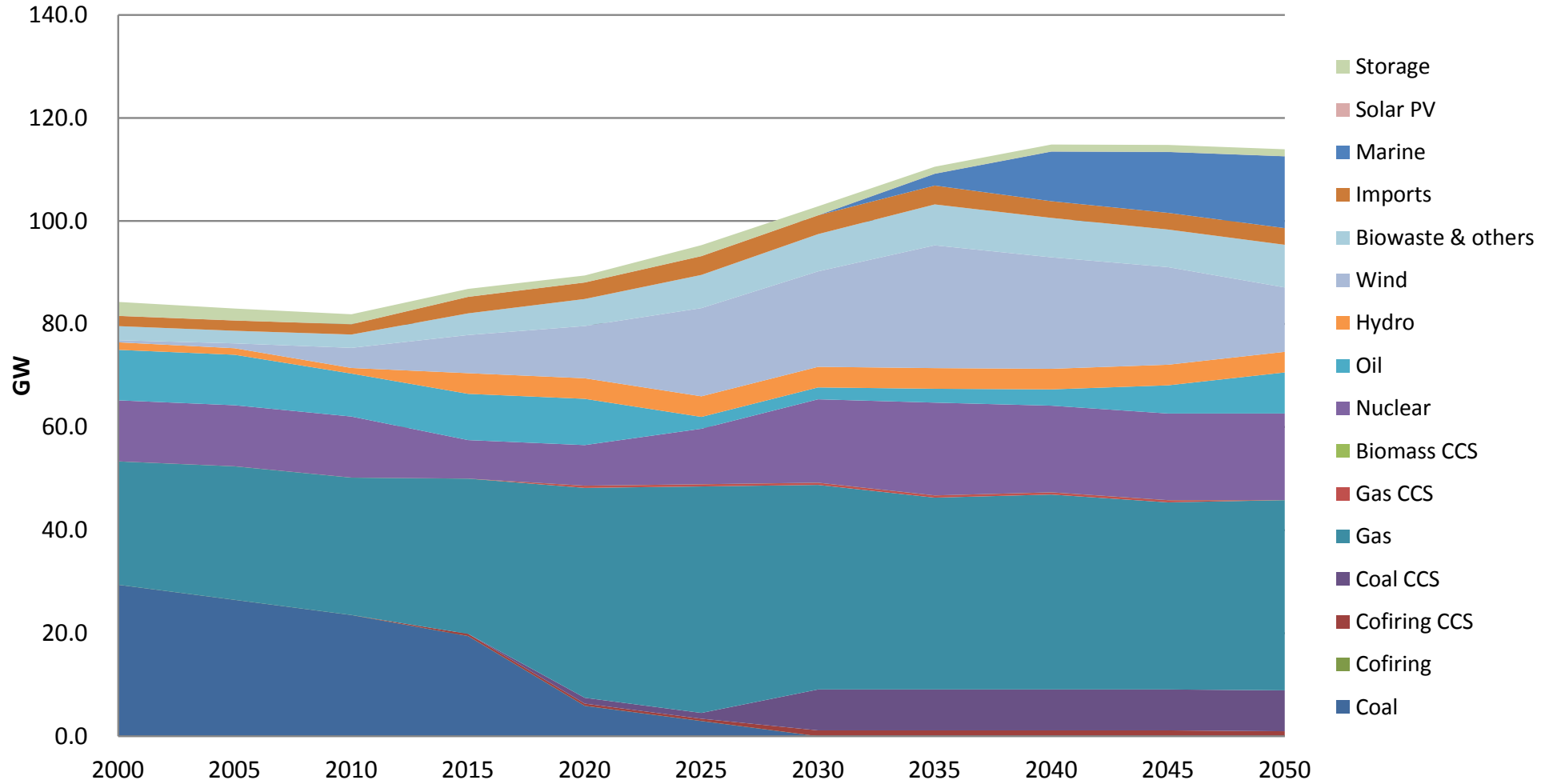
## Sectoral electricity demands (PJ)



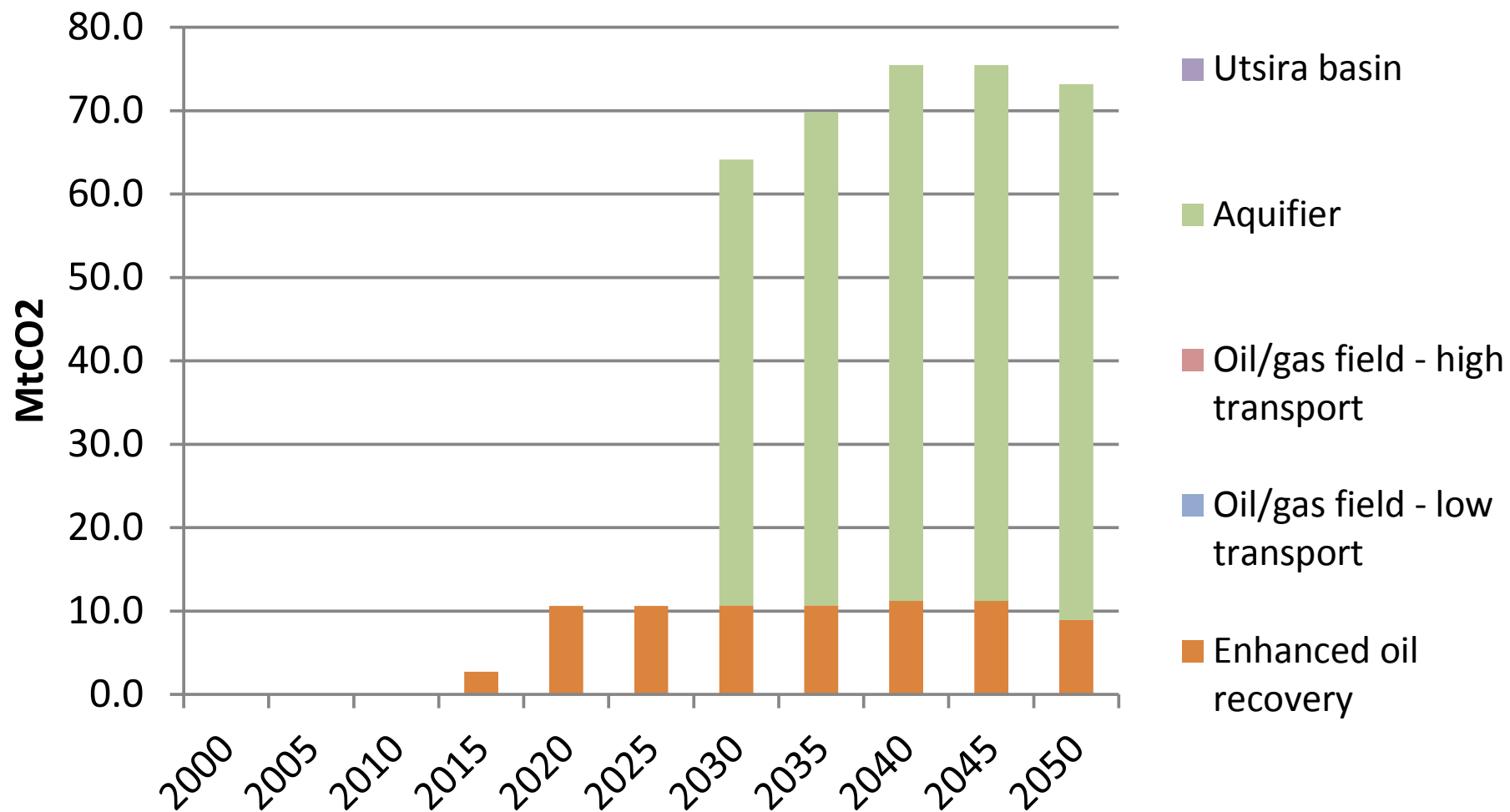
### Electricity generation mix



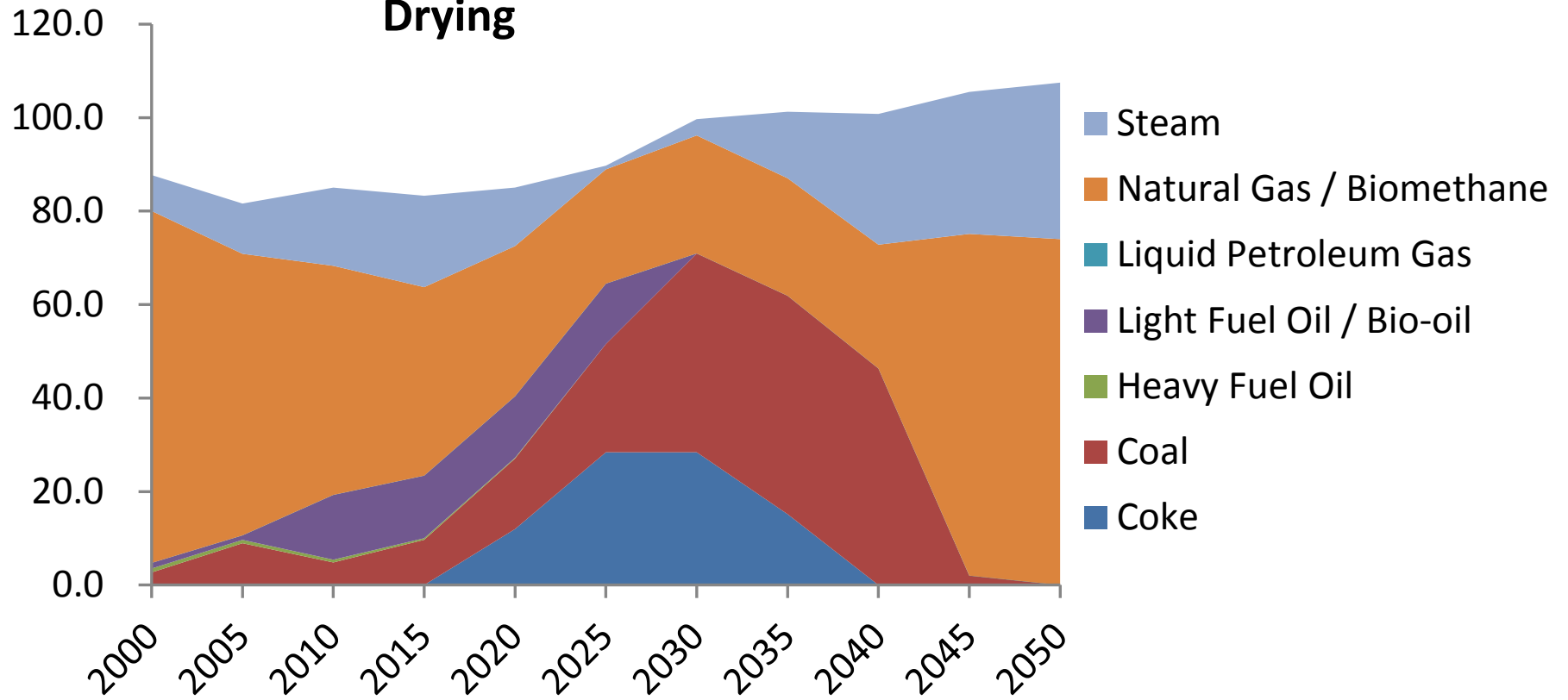
## Installed electric capacity



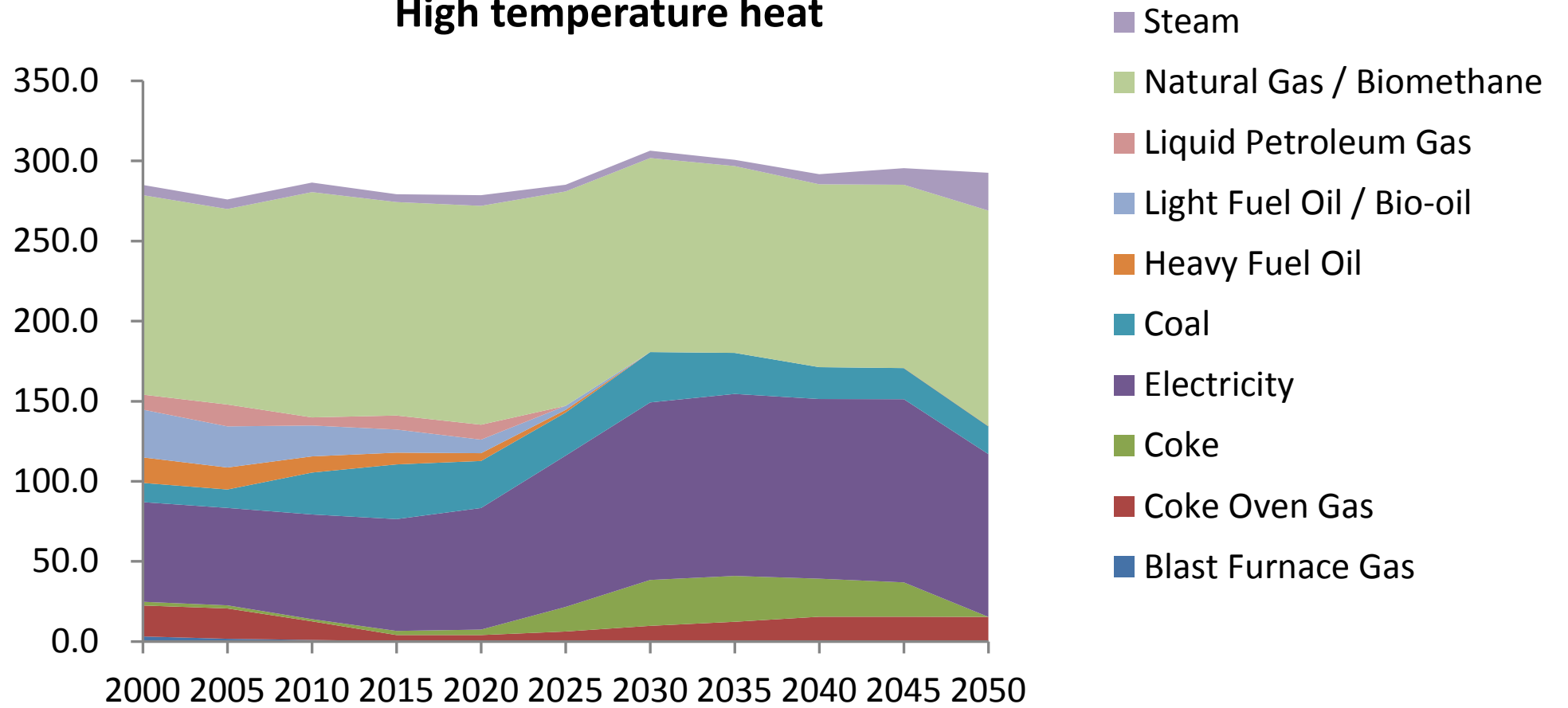
## Carbon capture and sequestration (CCS)



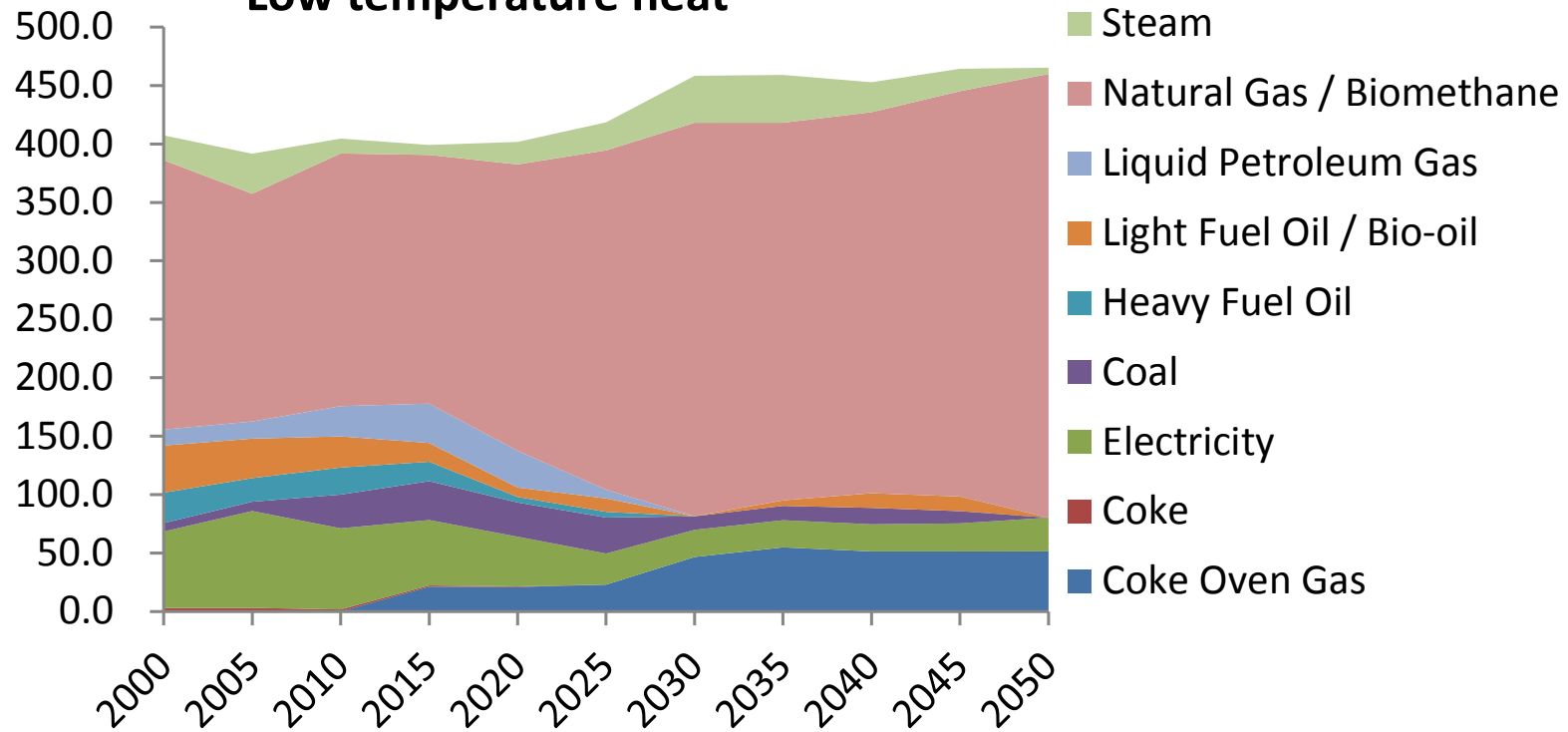
# Drying



## High temperature heat



### Low temperature heat



**Investment level by fuel (GW)**

