

Naming Convention

Section Identifier i.e. HE, HR, CD or EP	HR 1 - R 1 U	Vertical position in section (sides only) i.e. U, M or L. Absence of letter denotes centreline
Section Number (1-6) Numbered from downstream to upstream	Side i.e. R, L, T or B	Longitudinal position in section (numbered from 1)

Key

CD Circular duct	U Upper
HR HRSG	M Middle
HE Heat Exchanger	L Lower
EP End Plate	R Right Side (when viewed downstream from engine)
	L Left Side
	T Top
	B Bottom

There are 13 sections on the rig

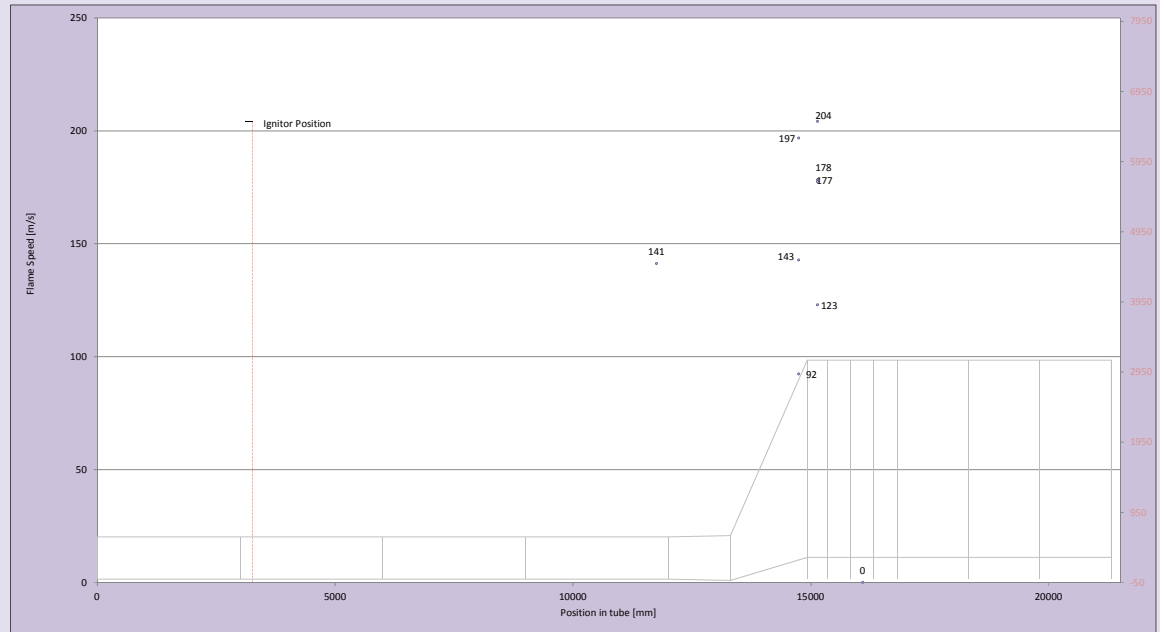
- 4 circular duct sections (CD1 to CD4)
- 6 HRSG sections (HR1 to HR6)
- 3 heat exchanger sections (HE1 to HE3) located between HR3 and HR4

Location of igniter mm Time of ignition seconds

IP Number	Location label	Data Name	Position in tube (mm)	Flame arrival time (s)	Avg Flame speed from last sensor (m/s)
IP0	CD4-L6	Ionisation probe 0	11758	28.23167	141
IP1	HR2-L5L	Ionisation probe 1	14745	28.24685	197
IP2	HR2-L5M	Ionisation probe 2	14745	28.25259	143
IP3	HR2-L5U	Ionisation probe 3	14745	28.26404	92
IP4	HR3-R1L	Ionisation probe 4	15140	28.25065	178
IP5	HR3-R1LM	Ionisation probe 5	15140	28.24824	204
IP6	HR3-R1M	Ionisation probe 6	15140	28.25073	177
IP7	HR3-R1U	Ionisation probe 7	15140	28.25919	123
IP8	HR3-L1U	Ionisation probe 8	15140	28.26549	-
IP9	HE2-R1M	Ionisation probe 9	16090	28.25552	-
IP10	HR4-L1L	Ionisation probe 10	16985	28.25726	-
IP11	HR4-L1M	Ionisation probe 11	16985	28.26498	-
IP12	HR4-L1U	Ionisation probe 12	16985	-	-
IP13	HR4-R1U	Ionisation probe 13	16985	28.26634	-
IP14	HR4-R3U	Ionisation probe 14	17575	28.31090	-
IP15	HR4-L5L	Ionisation probe 15	18165	ND	-
IP16	HR4-L5M	Ionisation probe 16	18165	ND	-
IP17	HR4-L5U	Ionisation probe 17	18165	ND	-
IP18	HR4-R5M	Ionisation probe 18	18165	ND	-
IP19	HR5-L2L	Ionisation probe 19	18775	ND	-
IP20	HR5-L2M	Ionisation probe 20	18775	ND	-
IP21	HR5-L2U	Ionisation probe 21	18775	ND	-
IP22	HR5-R2U	Ionisation probe 22	18775	ND	-
IP23	HR6-L1M	Ionisation probe 23	19985	ND	-

KEY: ND - not detected - sensor working but flame too weak to be picked up
 NW - not working - sensor not

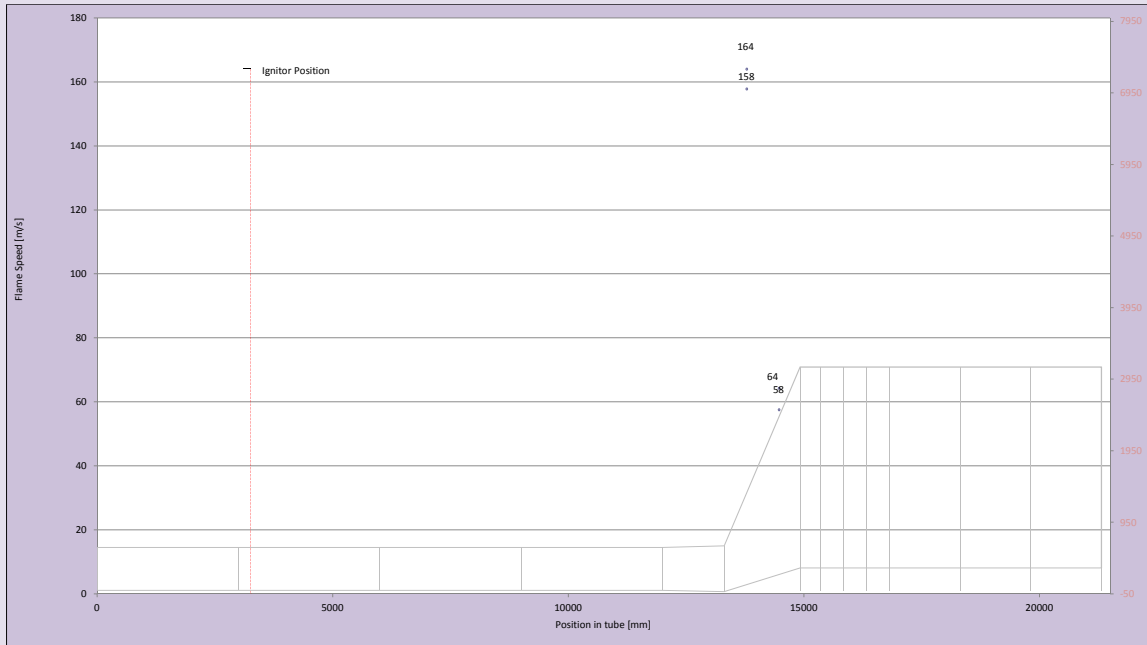
Only a weak responses from sensors after the HE. Many responses too weak to accurately pick out flame arrival time.



Location of igniter 3258 mm Time of ignition 28.1715 seconds

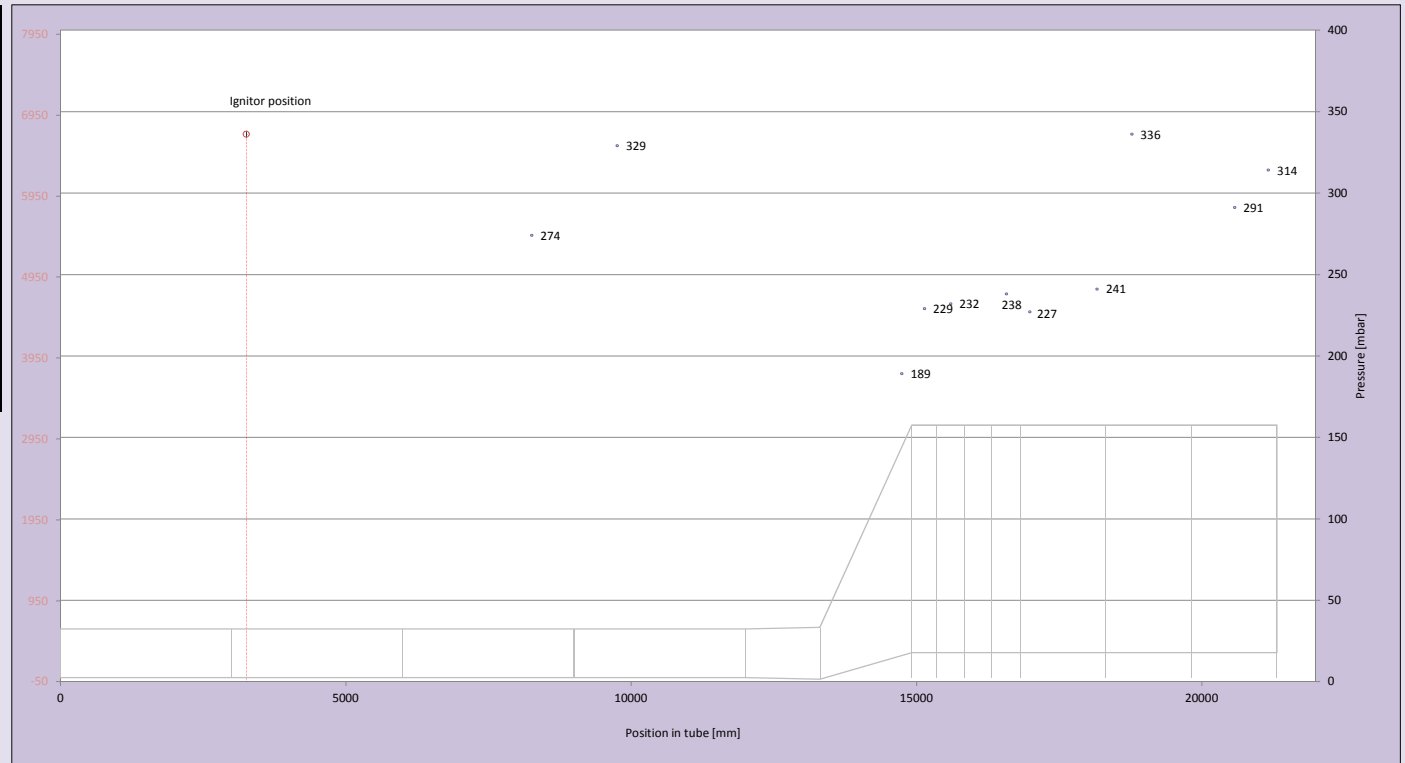
Rake Number	IP Number	Location label	Data Name	Position in tube (mm)	Flame arrival time (s)	Avg Flame speed from last sensor (m/s)
RA1	IP24	HR2-R2M	IP24	13785		
RA1	IP25	HR2-R2M	IP25	13785	28.2357	164
RA1	IP26	HR2-R2M	IP26	13785	28.2382	158
RA2	IP27	HR2-R4M	IP27	14475	28.2477	
RA2	IP28	HR2-R4M	IP28	14475	28.2477	58
RA2	IP29	HR2-R4M	IP29	14475	28.2489	64
RA3	IP30	HR4-R3M	IP30	17575		
RA3	IP31	HR4-R3M	IP31	17575		
RA3	IP32	HR4-R3M	IP32	17575		
RA4	IP33	HR4-R3L	IP33	17575	28.2817	
RA4	IP34	HR4-R3L	IP34	17575	28.2629	
RA4	IP35	HR4-R3L	IP35	17575	28.2643	

KEY: ND - not detected - sensor working but flame too weak to be picked up
 NW - not working - sensor not working



Location of igniter mm

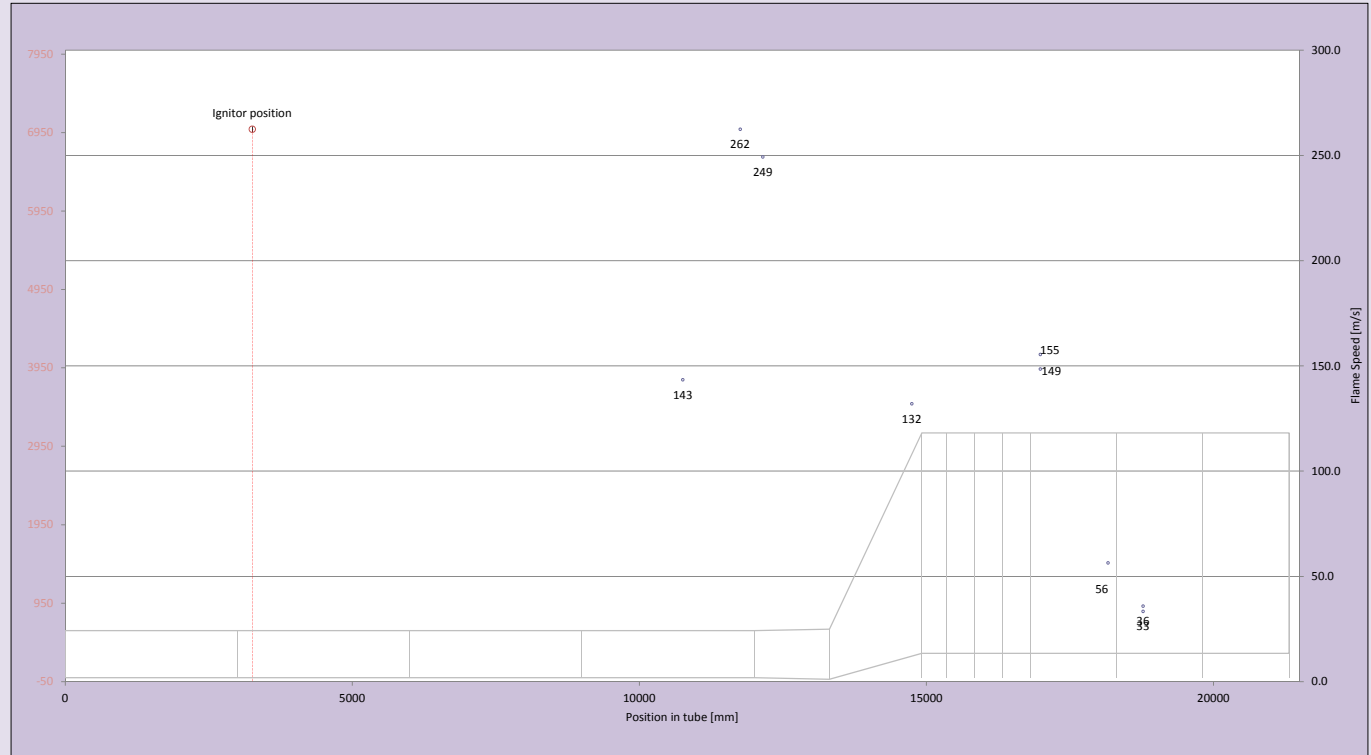
Transducer number	Location	Position in tube [mm]	ΔP_{max} [mbar]	Time ΔP_{max} [sec]
KU0	CD3-R5	8258	274	28.2906
KU1	CD4-R2	9758	329	28.2915
KU2	HR2-T5	14745	189	28.2553
KU3	HR3-L1L	15140	229	28.2821
KU4	HE1-R1U	15600	232	28.2805
KU5	HE3-R1L	16580	238	28.2764
KU6	HR4-R1L	16985	227	28.2801
KU7	HR4-R5U	18165	241	28.2643
KU8	HR5-R2L	18775	336	28.2719
KU9	HR6-R3L	20575	291	28.2671
KU10	HR6-LSL	21165	314	28.2685



Location of igniter 3258 mm Time of ignition 28.1715 seconds

OP Number	Location label	Position in tube (mm)	Flame arrival time (s)	Average flame speed (m/s)
OP0	CD4-L4	10758	28.2238	143.4
OP1	CD4-R6	11758	28.2276	262.5
OP2	HR1-R1	12152	28.2292	249.4
OP3	HR2-R5M	14745	28.2488	132.0
OP4	HE1-T1	15600	28.2513	
OP5	HE2-T1	16090	28.2549	
OP6	HE3-T1	16580	28.2575	
OP7	HR4-T1	16985	28.2617	148.5
OP8	HR4-R1M	16985	28.2632	155.4
OP9	HR4-R5L	18165	28.2841	56.5
OP10	HR5-T2	18775	28.3115	35.9
OP11	HR5-R2M	18775	28.3168	33.4

KEY: ND - not detected - sensor working but flame too weak to be picked up
 NW - not working - sensor not working

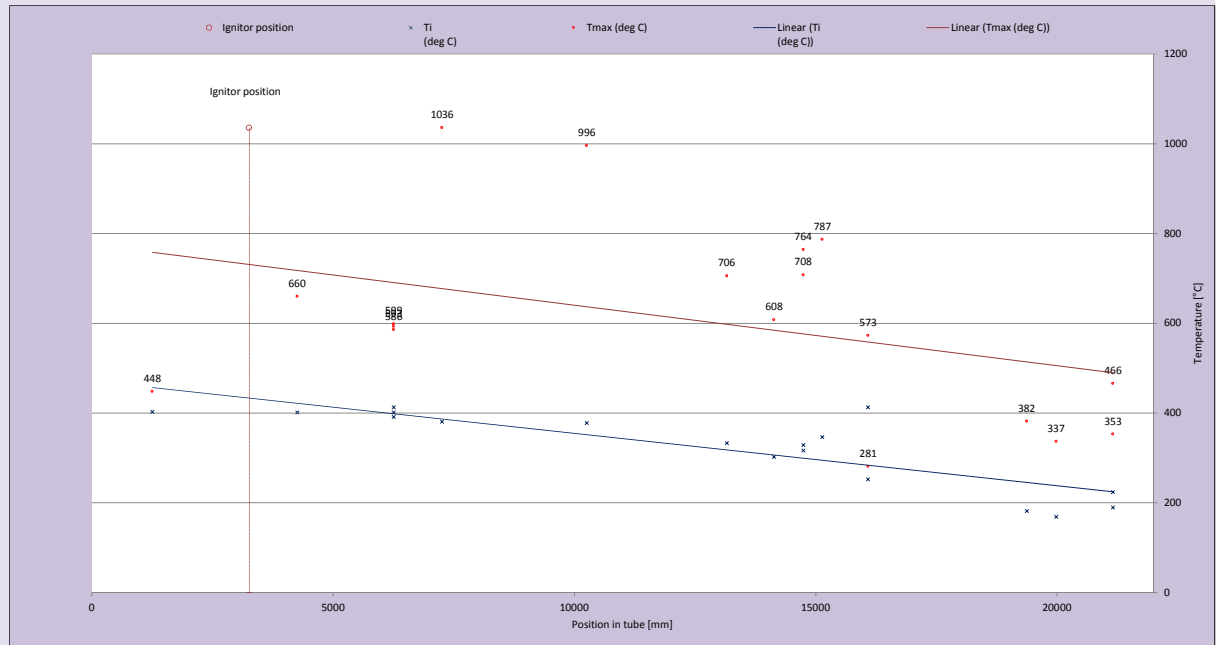


Location of igniter mm Time of ignition seconds

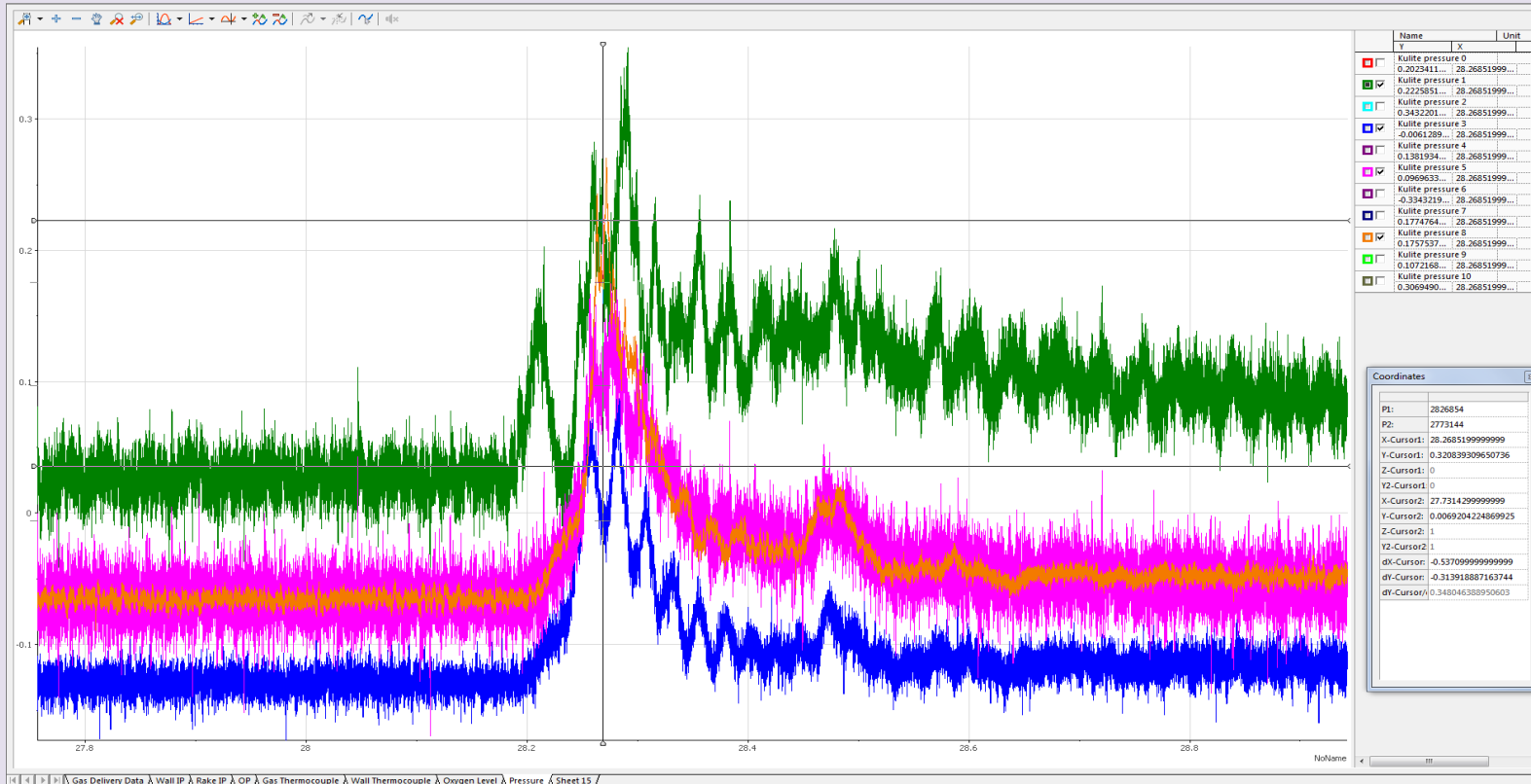
Thermocouple number	Location	Position in tube (mm)	Flame arrival time (s)	Average flame speed (m/s)	T _{max} (deg C)	T _i (deg C)
TC0	CD1-R3	1258			448	403
TC2	CD2-R3	4258	28.208		660	402
TC4	CD3-R3	7258	28.204		1036	381
TC6	CD4-R3	10258	28.211	429	996	378
TC8	HR1-R2	13160	28.236	116	706	333
TC12	CD3-T1	6258			586	392
TC13	CD3-L1	6258			593	402
TC14	CD3-B1	6258				
TC15	CD3-R1	6258			599	413
TC16	HR2-R3M	14140	28.234		608	303
TC17	HR2-R5L	14745	28.239		764	329
TC18	HR2-R5U	14745	28.252		708	317
TC19	HR3-L1M	15140	28.254		787	347
TC20	HE2-R1L	16090			573	413
TC21	HE2-R1U	16090	28.258		281	253
TC22	HR5-R4M	19375	28.359		382	182
TC23	HR6-R1M	19985	28.417		337	169
TC24	HR6-R5L	21165	28.617		353	190
TC25	HR6-R5U	21165	28.616		466	224

surface thermocouples [not plotted]

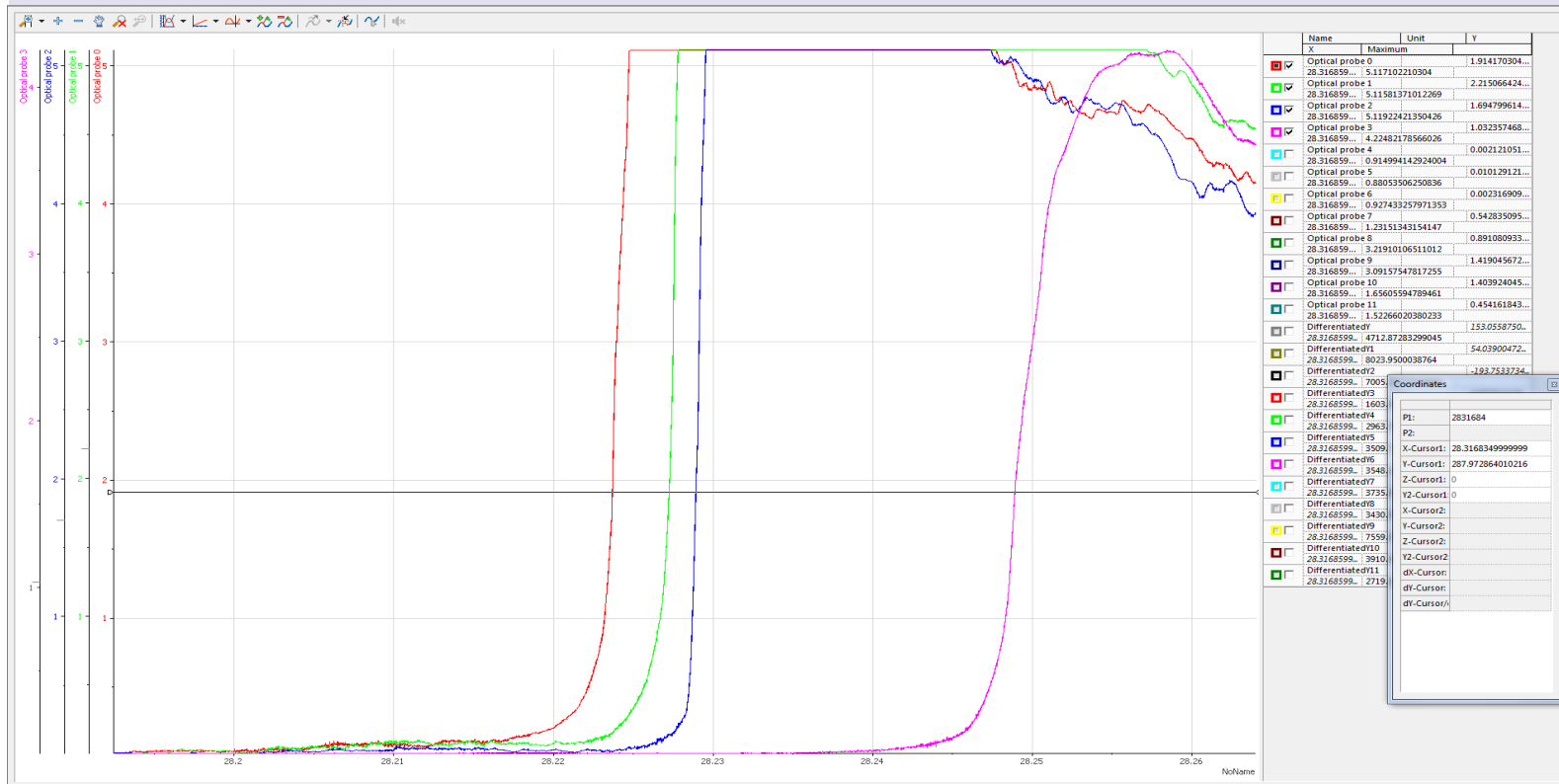
TC1	CD1-T2	1508		
TC3	CD2-T2	4508		
TC5	CD3-T2	7508		
TC7	CD4-T2	10508		



Pressure



Optical Probes

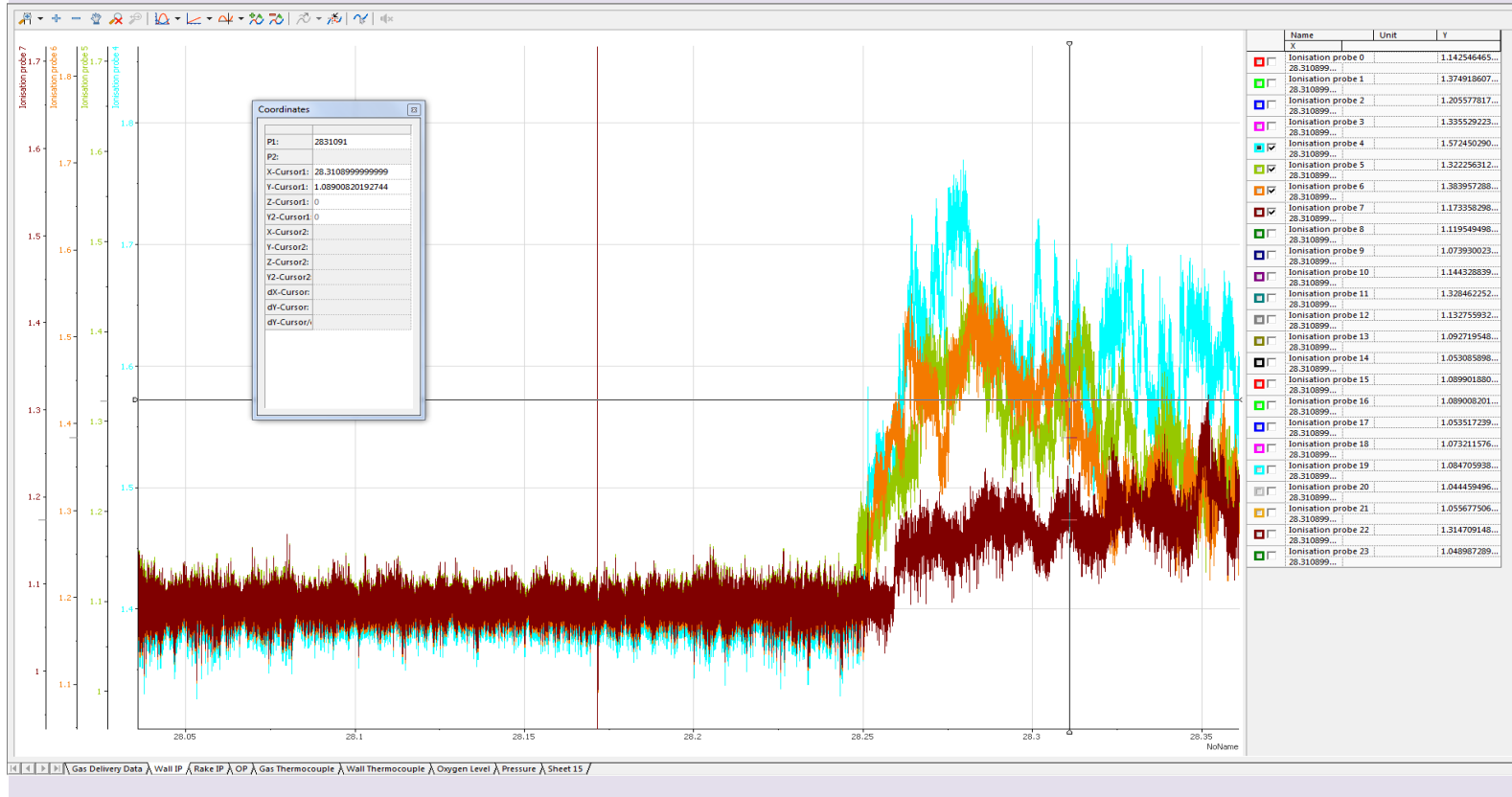


Name	Unit	Y
Optical probe 0	Maximum	1.914170304...
28.316859..._5.117102210304		
Optical probe 1		2.215066424...
28.316859..._5.11581371012269		
Optical probe 2		1.694799614...
28.316859..._5.11922421350426		
Optical probe 3		1.032557468...
28.316859..._4.22482178566026		
Optical probe 4		0.002121051...
28.316859..._0.914994142924004		
Optical probe 5		0.010129121...
28.316859..._0.88053506250836		
Optical probe 6		0.002316909...
28.316859..._0.927433257971353		
Optical probe 7		0.542835095...
28.316859..._1.23151343154147		
Optical probe 8		0.891080933...
28.316859..._3.21910106511012		
Optical probe 9		1.419045672...
28.316859..._3.09157547817255		
Optical probe 10		1.403924045...
28.316859..._1.65605594789461		
Optical probe 11		0.454161843...
28.316859..._1.52266020380233		
Differentiatedv		153.0558750...
28.316859..._4712.87283299045		
Differentiatedv1		54.03900472...
28.316859..._8023.9500038764		
Differentiatedv2		-192.7532724...
28.316859..._7005		
Differentiatedv3		
28.316859..._1603		
Differentiatedv4		
28.316859..._2963		
Differentiatedv5		
28.316859..._3509		
Differentiatedv6		
28.316859..._3546		
Differentiatedv7		
28.316859..._3735		
Differentiatedv8		
28.316859..._3430		
Differentiatedv9		
28.316859..._7559		
Differentiatedv10		
28.316859..._3910		
Differentiatedv11		
28.316859..._2719		

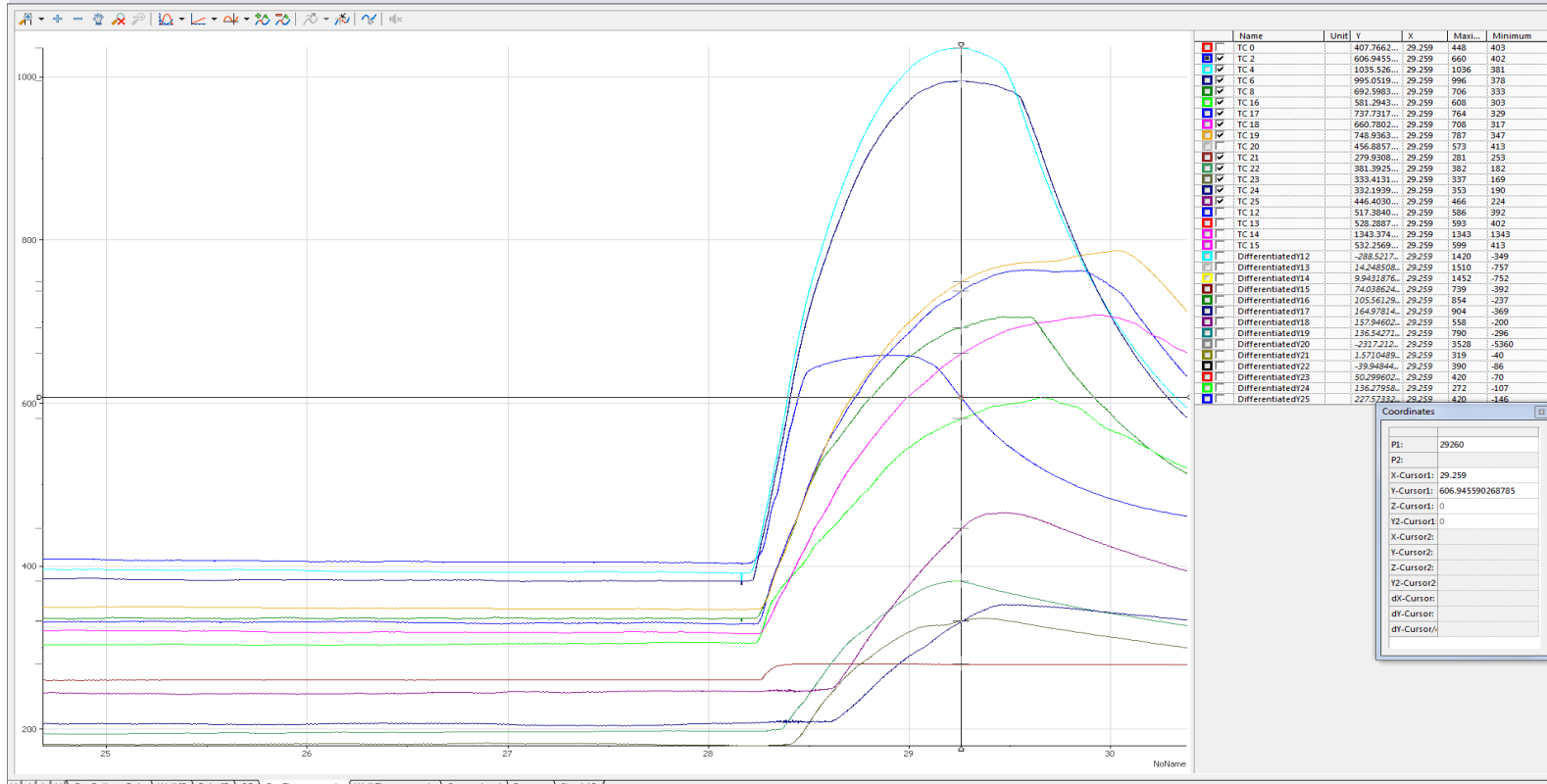
Coordinates

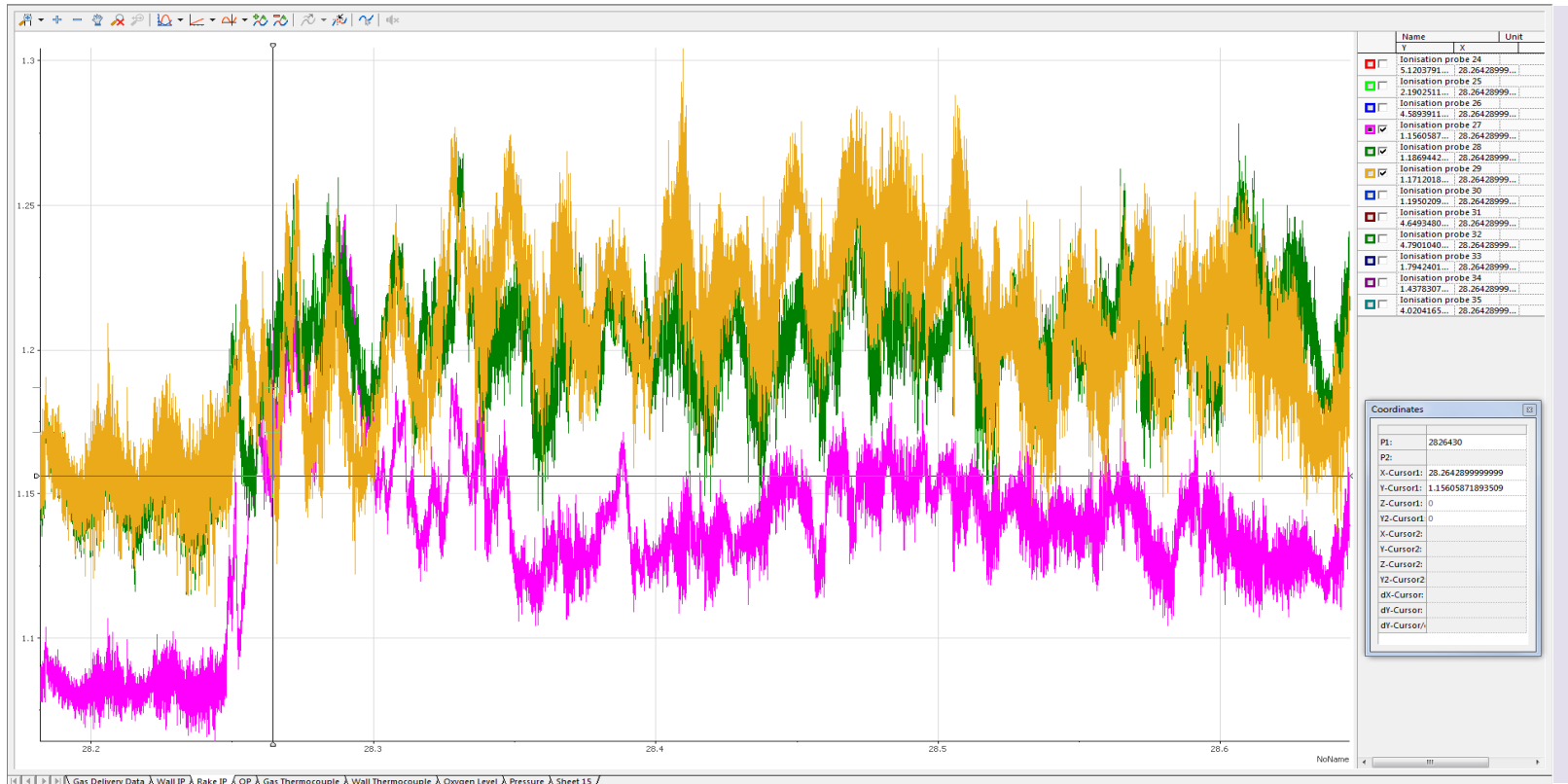
P1:	2831684
P2:	
X-Cursor1:	28.3168349999999
Y-Cursor1:	287.972864010216
Z-Cursor1:	0
Y2-Cursor1:	0
X-Cursor2:	
Y-Cursor2:	
Z-Cursor2:	
Y2-Cursor2:	
dX-Cursor:	
dY-Cursor:	
dZ-Cursor:	

Ionisation Probes



Temperature





Sensor	OLD DESIGNATION	NEW DESIGNATION	Section	Section Number	Side	Horizontal Location	Vertical Location	PORT REF	SIZE	"X"	"Y"	"Z"
-		CD1-T1	CD	1	T	1		1	1" BSPP	0	298	258
TC1	TS1-1	CD1-T2	CD	1	T	2		NA	SURFACE	0	298	1508
-		CD1-B1	CD	1	B	1		2	1" BSPP	0	-298	258
-	NS1-1	CD1-R1	CD	1	R	1		3	3/4" BSPP	298	0	258
-	FS1-1	CD1-L1	CD	1	L	1		4	3/4" BSPP	-298	0	258
-	NS1-2	CD1-R2	CD	1	R	2		5	3/4" BSPP	298	0	758
-	FS1-2	CD1-L2	CD	1	L	2		6	3/4" BSPP	-298	0	758
TC0	NS1-3	CD1-R3	CD	1	R	3		7	3/4" BSPP	298	0	1258
-	FS1-3	CD1-L3	CD	1	L	3		8	3/4" BSPP	-298	0	1258
-	NS1-4	CD1-R4	CD	1	R	4		9	3/4" BSPP	298	0	1758
-	FS1-4	CD1-L4	CD	1	L	4		10	3/4" BSPP	-298	0	1758
-	NS1-5	CD1-R5	CD	1	R	5		11	3/4" BSPP	298	0	2258
-	FS1-5	CD1-L5	CD	1	L	5		12	3/4" BSPP	-298	0	2258
-	NS1-6	CD1-R6	CD	1	R	6		13	3/4" BSPP	298	0	2758
-	FS1-6	CD1-L6	CD	1	L	6		14	3/4" BSPP	-298	0	2758
IGN		CD2-T1	CD	2	T	1		15	1" BSPP	0	298	3258
TC3	TS2-1	CD2-T2	CD	2	T	2		NA	SURFACE	0	298	4508
-		CD2-B1	CD	2	B	1		16	1" BSPP	0	-298	2358
-	NS2-1	CD2-R1	CD	2	R	1		17	3/4" BSPP	298	0	3258
-	FS2-1	CD2-L1	CD	2	L	1		18	3/4" BSPP	-298	0	3258
-	NS2-2	CD2-R2	CD	2	R	2		19	3/4" BSPP	298	0	3758
-	FS2-2	CD2-L2	CD	2	L	2		20	3/4" BSPP	-298	0	3758
TC2	NS2-3	CD2-R3	CD	2	R	3		21	3/4" BSPP	298	0	4258
-	FS2-3	CD2-L3	CD	2	L	3		22	3/4" BSPP	-298	0	4258
-	NS2-4	CD2-R4	CD	2	R	4		23	3/4" BSPP	298	0	4758
-	FS2-4	CD2-L4	CD	2	L	4		24	3/4" BSPP	-298	0	4758
-	NS2-5	CD2-R5	CD	2	R	5		25	3/4" BSPP	298	0	5258
-	FS2-5	CD2-L5	CD	2	L	5		26	3/4" BSPP	-298	0	5258
-	NS2-6	CD2-R6	CD	2	R	6		27	3/4" BSPP	298	0	5758
-	FS2-6	CD2-L6	CD	3	L	6		28	3/4" BSPP	-298	0	5758
TC12		CD3-T1	CD	3	T	1		29	1" BSPP	0	298	6258
TC5	TS1-1	CD3-T2	CD	3	T	2		NA	SURFACE	0	298	7508
TC14		CD3-B1	CD	3	B	1		30	1" BSPP	0	-298	6258
TC15	NS3-1	CD3-R1	CD	3	R	1		31	3/4" BSPP	298	0	6258
TC13	FS3-1	CD3-L1	CD	3	L	1		32	3/4" BSPP	-298	0	6258
-	NS3-2	CD3-R2	CD	3	R	2		33	3/4" BSPP	298	0	6758
-	FS3-2	CD3-L2	CD	3	L	2		34	3/4" BSPP	-298	0	6758
TC4	NS3-3	CD3-R3	CD	3	R	3		35	3/4" BSPP	298	0	7258
-	FS3-3	CD3-L3	CD	3	L	3		36	3/4" BSPP	-298	0	7258
-	NS3-4	CD3-R4	CD	3	R	4		37	3/4" BSPP	298	0	7758
-	FS3-4	CD3-L4	CD	3	L	4		38	3/4" BSPP	-298	0	7758
KU0	NS3-5	CD3-R5	CD	3	R	5		39	3/4" BSPP	298	0	8258
-	FS3-5	CD3-L5	CD	3	L	5		40	3/4" BSPP	-298	0	8258
-	NS3-6	CD3-R6	CD	3	R	6		41	3/4" BSPP	298	0	8758
-	FS3-6	CD3-L6	CD	3	L	6		42	3/4" BSPP	-298	0	8758
-		CD4-T1	CD	4	T	1		43	1" BSPP	0	298	9258
TC7	TS1-1	CD4-T2	CD	4	T	2		NA	SURFACE	0	298	10508
-		CD4-B1	CD	4	B	1		44	1" BSPP	0	-298	9258
-	NS4-1	CD4-R1	CD	4	R	1		45	3/4" BSPP	298	0	9258
-	FS4-1	CD4-L1	CD	4	L	1		46	3/4" BSPP	-298	0	9258
KU1	NS4-2	CD4-R2	CD	4	R	2		47	3/4" BSPP	298	0	9758
-	FS4-2	CD4-L2	CD	4	L	2		48	3/4" BSPP	-298	0	9758
TC6	NS4-3	CD4-R3	CD	4	R	3		49	3/4" BSPP	298	0	10258
-	FS4-3	CD4-L3	CD	4	L	3		50	3/4" BSPP	-298	0	10258
-	NS4-4	CD4-R4	CD	4	R	4		51	3/4" BSPP	298	0	10758
OP0	FS4-4	CD4-L4	CD	4	L	4		52	3/4" BSPP	-298	0	10758
-	NS4-5	CD4-R5	CD	4	R	5		53	3/4" BSPP	298	0	11258
-	FS4-5	CD4-L5	CD	4	L	5		54	3/4" BSPP	-298	0	11258
OP1	NS4-6	CD4-R6	CD	4	R	6		55	3/4" BSPP	298	0	11758

Sensor	OLD DESIGNATION	NEW DESIGNATION	Section	Section Number	Side	Horizontal Location	Vertical Location	PORT REF	SIZE	"X"	"Y"	"Z"
IP0	FS4-6	CD4-L6	CD	4	L	6		56	3/4" BSPP	-298	0	11758
OP2		HR1-R1	HR	1	R	1		57	3/4" BSPP	308	0	12152
-		HR1-L1	HR	1	L	1		58	3/4" BSPP	-308	0	12152
TC8		HR1-R2	HR	1	R	2		59	3/4" BSPP	393	0	13160
-		HR1-L2	HR	1	L	2		60	3/4" BSPP	-393	0	13160
RA1		HR2-R2M	HR	2	R	2	M	61	11/4" BSPP	448	70	13785
RA1		HR2-L2M	HR	2	L	2	M	62	11/4" BSPP	-448	70	13785
TC16		HR2-R3M	HR	2	R	3	M	63	3/4" BSPP	528	410	14140
-		HR2-L3M	HR	2	L	3	M	64	3/4" BSPP	-528	410	14140
-		HR2-T3	HR	2	T	3		65	1" BSPP	0	1122	14215
RA2		HR2-R4M	HR	2	R	4	M	66	11/4" BSPP	598	700	14475
RA2		HR2-L4M	HR	2	L	4	M	67	11/4" BSPP	-598	700	14475
-		HR2-B5	HR	2	B	5		68	1" BSPP	0	-100	14745
KU2		HR2-T5	HR	2	T	5		69	1" BSPP	0	2315	14745
TC17		HR2-R5L	HR	2	R	5	L	70	3/4" BSPP	662	310	14745
IP1		HR2-L5L	HR	2	L	5	L	71	3/4" BSPP	-662	310	14745
OP3		HR2-R5M	HR	2	R	5	M	72	3/4" BSPP	662	975	14745
IP2		HR2-L5M	HR	2	L	5	M	73	3/4" BSPP	-662	975	14745
TC18		HR2-R5U	HR	2	R	5	U	74	3/4" BSPP	662	1660	14745
IP3		HR2-L5U	HR	2	L	5	U	75	3/4" BSPP	-662	1660	14745
KU3		HR3-L1L	HR	3	L	1	L	76	3/4" BSPP	-700	400	15140
TC19		HR3-L1M	HR	3	L	1	M	77	11/4" BSPP	-700	1335	15140
IP8		HR3-L1U	HR	3	L	1	U	78	3/4" BSPP	-700	2270	15140
IP4		HR3-R1L	HR	3	R	1	L	136	3/4" BSPP	700	400	15140
IP5		HR3-R1LM	HR	3	R	1	LM	137	3/4" BSPP	700	868	15140
IP6		HR3-R1M	HR	3	R	1	M	138	3/4" BSPP	700	1335	15140
-		HR3-R1UM	HR	3	R	1	UM	139	3/4" BSPP	700	1802	15140
IP7		HR3-R1U	HR	3	R	1	U	140	3/4" BSPP	700	2270	15140
-		HE1-R1L	HE	1	R	1	L	79	3/4" BSPP	700	400	15600
-		HE1-R1M	HE	1	R	1	M	80	3/4" BSPP	700	1335	15600
KU4		HE1-R1U	HE	1	R	1	U	81	3/4" BSPP	700	2270	15600
TC20		HE2-R1L	HE	2	R	1	L	83	3/4" BSPP	700	400	16090
IP9		HE2-R1M	HE	2	R	1	M	84	3/4" BSPP	700	1335	16090
TC21		HE2-R1U	HE	2	R	1	U	85	3/4" BSPP	700	2270	16090
KU5		HE3-R1L	HE	3	R	1	L	87	3/4" BSPP	700	400	16580
-		HE3-R1M	HE	3	R	1	M	88	3/4" BSPP	700	1335	16580
-		HE3-R1U	HE	3	R	1	U	89	3/4" BSPP	700	2270	16580
OP4		HE1-T1	HE	1	T	1		82	3/4" BSPP HOLE	-47	2735	15600
OP5		HE2-T1	HE	2	T	1		86	3/4" BSPP HOLE	0	2735	16090
OP6		HE3-T1	HE	3	T	1		90	3/4" BSPP HOLE	-47	2735	16580
OP7		HR4-T1	HR	4	T	1		91	1" BSPP	0	2735	16985
-		HR4-B1	HR	4	B	1		92	1" BSPP	0	-65	16985
KU6		HR4-R1L	HR	4	R	1	L	93	3/4" BSPP	700	400	16985
IP10		HR4-L1L	HR	4	L	1	L	94	3/4" BSPP	-700	400	16985
OP8		HR4-R1M	HR	4	R	1	M	95	3/4" BSPP	700	1335	16985
IP11		HR4-L1M	HR	4	L	1	M	96	3/4" BSPP	-700	1335	16985
IP13		HR4-R1U	HR	4	R	1	U	97	3/4" BSPP	700	2270	16985
IP12		HR4-L1U	HR	4	L	1	U	98	3/4" BSPP	-700	2270	16985
RA3		HR4-R3M	HR	4	R	3	M	99	11/4" BSPP	700	1335	17575
RA3		HR4-L3M	HR	4	L	3	M	100	11/4" BSPP	-700	1335	17575
RA4		HR4-R3L	HR	4	R	3	L	141	11/4" BSPP	700	400	17575
IP14		HR4-R3U	HR	4	R	3	U	142	3/4" BSPP	700	2270	17575
RA4		HR4-L3L	HR	4	L	3	L	143	11/4" BSPP	-700	400	17575
-		HR4-L3U	HR	4	L	3	U	144	3/4" BSPP	-700	2270	17575
IP18		HR4-R5M	HR	4	R	5	M	101	3/4" BSPP	700	1335	18165
IP16		HR4-L5M	HR	4	L	5	M	102	3/4" BSPP	-700	1335	18165
OP9		HR4-R5L	HR	4	R	5	L	145	3/4" BSPP	700	400	18165
KU7		HR4-R5U	HR	4	R	5	U	146	3/4" BSPP	700	2270	18165
IP15		HR4-L5L	HR	4	L	5	L	147	3/4" BSPP	-700	400	18165

Sensor	OLD DESIGNATION	NEW DESIGNATION	Section	Section Number	Side	Horizontal Location	Vertical Location	PORT REF	SIZE	"X"	"Y"	"Z"
IP17		HR4-L5U	HR	4	L	5	U	148	3/4" BSPP	-700	2270	18165
-		HR5-R1M	HR	5	R	1	M	NA	SURFACE	700	1200	18455
OP10		HR5-T2	HR	5	T	2		103	1" BSPP	0	2735	18775
-		HR5-B2	HR	5	B	2		104	1" BSPP	0	-65	18775
KU8		HR5-R2L	HR	5	R	2	L	105	3/4" BSPP	700	400	18775
IP19		HR5-L2L	HR	5	L	2	L	106	3/4" BSPP	-700	400	18775
OP11		HR5-R2M	HR	5	R	2	M	107	3/4" BSPP	700	1335	18775
IP20		HR5-L2M	HR	5	L	2	M	108	3/4" BSPP	-700	1335	18775
IP22		HR5-R2U	HR	5	R	2	U	109	3/4" BSPP	700	2270	18775
IP21		HR5-L2U	HR	5	L	2	U	110	3/4" BSPP	-700	2270	18775
TC22		HR5-R4M	HR	5	R	4	M	111	11/4" BSPP	700	1335	19375
-		HR5-L4M	HR	5	L	4	M	112	11/4" BSPP	-700	1335	19375
TC23		HR6-R1M	HR	6	R	1	M	113	3/4" BSPP	700	1335	19985
IP23		HR6-L1M	HR	6	L	1	M	114	3/4" BSPP	-700	1335	19985
-		HR6-T3	HR	6	T	3		115	1" BSPP	0	2735	20575
-		HR6-B3	HR	6	B	3		116	3/4" BSPP	0	-65	20575
KU9		HR6-R3L	HR	6	R	3	L	117	3/4" BSPP	700	400	20575
-		HR6-L3L	HR	6	L	3	L	118	3/4" BSPP	-700	400	20575
-		HR6-R3M	HR	6	R	3	M	119	11/4" BSPP	700	1335	20575
-		HR6-L3M	HR	6	L	3	M	120	11/4" BSPP	-700	1335	20575
-		HR6-R3U	HR	6	R	3	U	121	3/4" BSPP	700	2270	20575
-		HR6-L3U	HR	6	L	3	U	122	3/4" BSPP	-700	2270	20575
-		HR6-B5	HR	6	B	5		123	1" BSPP	0	-65	21165
TC24		HR6-R5L	HR	6	R	5	L	124	3/4" BSPP	700	400	21165
KU10		HR6-L5L	HR	6	L	5	L	125	3/4" BSPP	-700	400	21165
-		HR6-R5M	HR	6	R	5	M	126	3/4" BSPP	700	1335	21165
-		HR6-L5M	HR	6	L	5	M	127	3/4" BSPP	-700	1335	21165
TC25		HR6-R5U	HR	6	R	5	U	128	3/4" BSPP	700	2270	21165
-		HR6-L5U	HR	6	L	5	U	129	3/4" BSPP	-700	2270	21165
-		EP-1L	EP			1	L	130	1" BSPP	650	-15	21330
-		EP-2L	EP			2	L	131	1" BSPP	0	-15	21330
-		EP-3L	EP			3	L	132	1" BSPP	-650	-15	21330
-		EP-1M	EP			1	M	133	1" BSPP	250	1335	21330
-		EP-2M	EP			2	M	134	1" BSPP	-250	1335	21330
-		EP-1U	EP			1	U	135	3/4" BSPP	0	2270	21330

