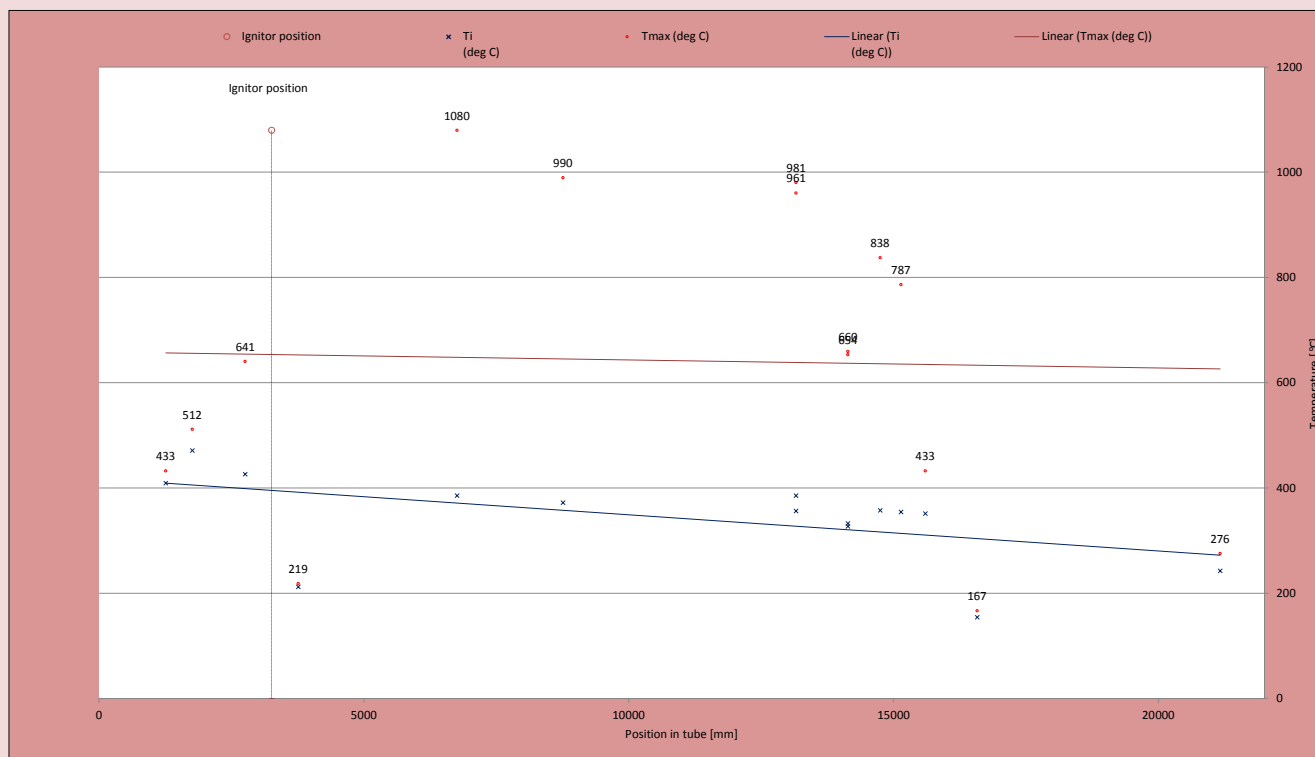


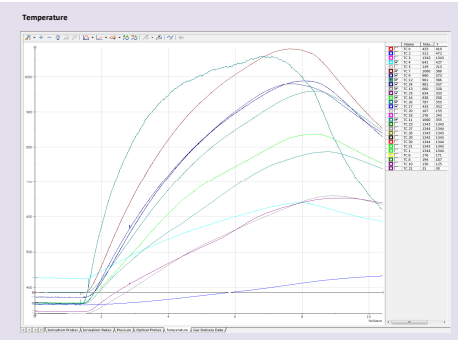
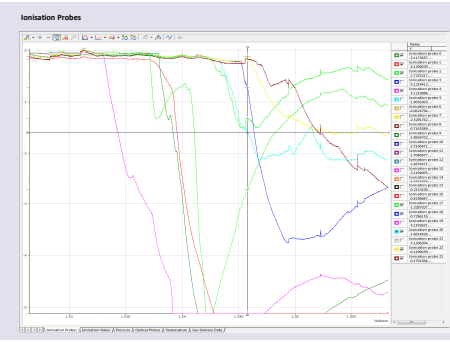
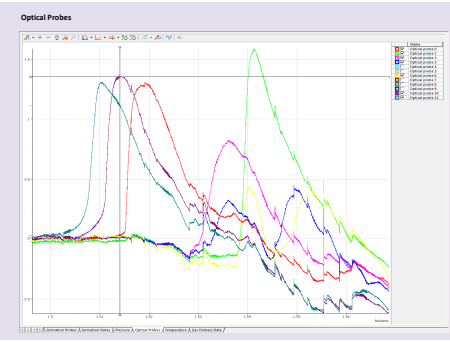
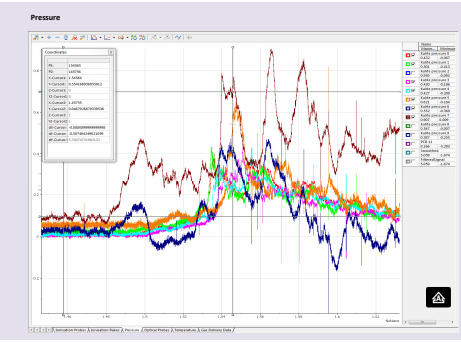
Location of igniter  mm

Thermocouple number	Location	Position in tube (mm)	T <sub>max</sub> (deg C)	T <sub>i</sub> (deg C)
TC0	CD1-R3	1258	433	410
TC2	CD1-R4	1758	512	472
TC3	CD1-R5	2258		
TC4	CD1-R6	2758	641	427
TC5	CD2-R2	3758	219	213
TC7	CD3-R2	6758	1080	386
TC9	CD3-R6	8758	990	373
TC12	HR1-R2	13160	961	386
TC24	HR1-L2	13160	981	357
TC13	HR2-R3M	14140	660	328
TC25	HR2-L3M	14140	654	333
TC16	HR2-R5L	14745	838	358
TC26	HR3-L1M	15140	787	355
TC17	HE1-R1M	15600	433	352
TC20	HE3-R1L	16580	167	155
TC18	HR6-R5L	21165	276	243
TC11	#N/A	#N/A		
TC14	#N/A	#N/A		
TC15	#N/A	#N/A		
TC19	#N/A	#N/A		
TC22	#N/A	#N/A		
TC23	#N/A	#N/A		
TC27	#N/A	#N/A		
TC28	#N/A	#N/A		
TC29	#N/A	#N/A		
TC30	#N/A	#N/A		
TC31	#N/A	#N/A		

surface thermocouples [not plotted]

TC1	CD1-T2	1508		
TC6	CD2-T2	4508	176	171
TC8	CD3-T2	7508	194	187
TC10	CD4-T2	10508	130	125
TC21	HR5-R1M	18455	31	30





Sensor	OLD DESIGNATION	NEW DESIGNATION	Section	Section Number	Side	Horizontal Location	Vertical Location	PORT REF	SIZE	"X"	"Y"	"Z"
-		HR1-L1	HR	1	L	1		58	3/4" BSPP	-308	0	12152
TC24		HR1-L2	HR	1	L	2		60	3/4" BSPP	-393	0	13160
<b>RA1</b>		HR2-L2M	HR	2	L	2	M	62	11/4" BSPP	-448	70	13785
TC25		HR2-L3M	HR	2	L	3	M	64	3/4" BSPP	-528	410	14140
<b>RA2</b>		HR2-L4M	HR	2	L	4	M	67	11/4" BSPP	-598	700	14475
IP9		HR2-L5L	HR	2	L	5	L	71	3/4" BSPP	-662	310	14745
IP8		HR2-L5M	HR	2	L	5	M	73	3/4" BSPP	-662	975	14745
IP11		HR2-L5U	HR	2	L	5	U	75	3/4" BSPP	-662	1660	14745
KU9		HR3-L1L	HR	3	L	1	L	76	3/4" BSPP	-700	400	15140
TC26		HR3-L1M	HR	3	L	1	M	77	11/4" BSPP	-700	1335	15140
IP7		HR3-L1U	HR	3	L	1	U	78	3/4" BSPP	-700	2270	15140
IP4		HR4-L1L	HR	4	L	1	L	94	3/4" BSPP	-700	400	16985
IP2		HR4-L1M	HR	4	L	1	M	96	3/4" BSPP	-700	1335	16985
IP13		HR4-L1U	HR	4	L	1	U	98	3/4" BSPP	-700	2270	16985
<b>RA3</b>		HR4-L3M	HR	4	L	3	M	100	11/4" BSPP	-700	1335	17575
IP21		HR4-L5M	HR	4	L	5	M	102	3/4" BSPP	-700	1335	18165
IP16		HR5-L2L	HR	5	L	2	L	106	3/4" BSPP	-700	400	18775
IPO		HR5-L2M	HR	5	L	2	M	108	3/4" BSPP	-700	1335	18775
IP1		HR5-L2U	HR	5	L	2	U	110	3/4" BSPP	-700	2270	18775
<b>RA4</b>		HR5-L4M	HR	5	L	4	M	112	11/4" BSPP	-700	1335	19375
IP3		HR6-L1M	HR	6	L	1	M	114	3/4" BSPP	-700	1335	19985
IP19		HR6-L3L	HR	6	L	3	L	118	3/4" BSPP	-700	400	20575
IP23		HR6-L3M	HR	6	L	3	M	120	11/4" BSPP	-700	1335	20575
IP22		HR6-L3U	HR	6	L	3	U	122	3/4" BSPP	-700	2270	20575
KU5		HR6-L5L	HR	6	L	5	L	125	3/4" BSPP	-700	400	21165
IP6		HR6-L5M	HR	6	L	5	M	127	3/4" BSPP	-700	1335	21165
IP20		HR6-L5U	HR	6	L	5	U	129	3/4" BSPP	-700	2270	21165
-		EP-1L	EP			1	L	130	1" BSPP	650	-15	21330
-		EP-2L	EP			2	L	131	1" BSPP	0	-15	21330
-		EP-3L	EP			3	L	132	1" BSPP	-650	-15	21330
PCB		EP-1M	EP			1	M	133	1" BSPP	250	1335	21330
-		EP-2M	EP			2	M	134	1" BSPP	-250	1335	21330
-		EP-1U	EP			1	U	135	3/4" BSPP	0	2270	21330

